

A SURVEY OF DEFENDED ENCLOSURES IN CEREDIGION, 2006: GAZETTEER OF ORDNANCE SURVEY GRID SQUARES SN33 AND SN34



Paratowyd gan Archaeoleg
Cambria
Ar gyfer Cadw
Prepared by Cambria
Archaeology

ARCHAEOLEG CAMBRIA ARCHAEOLOGY

RHIF YR ADRODDIAD / REPORT NO. 2006/20
RHIF Y PROSIECT / PROJECT RECORD NO. 54269

Mawrth 2006
March 2006

A SURVEY OF DEFENDED ENCLOSURES IN CEREDIGION, 2006: GAZETTEER OF ORDNANCE SURVEY GRID SQUARES SN33 AND SN34

Gan / By

K Murphy, R Ramsey and M Page

*Archaeoleg Cambria yw enw marchnata Ymddiriedolaeth Archaeolegol Dyfed Cyfyngedig.
Cambria Archaeology is the marketing name of the Dyfed Archaeological Trust Limited.*

Paratowyd yr adroddiad yma at ddefnydd y cwsmer yn unig. Ni dderbynnir cyfrifoldeb gan Archaeoleg Cambria am ei ddefnyddio gan unrhyw berson na phersonau eraill a fydd yn ei ddarllen neu ddiwyddu ar y gwybodaeth y mae'n ei gynnwys

The report has been prepared for the specific use of the client. Cambria Archaeology can accept no responsibility for its use by any other person or persons who may read it or rely on the information it contains.



Llywodraeth Cynulliad Cymru
Welsh Assembly Government

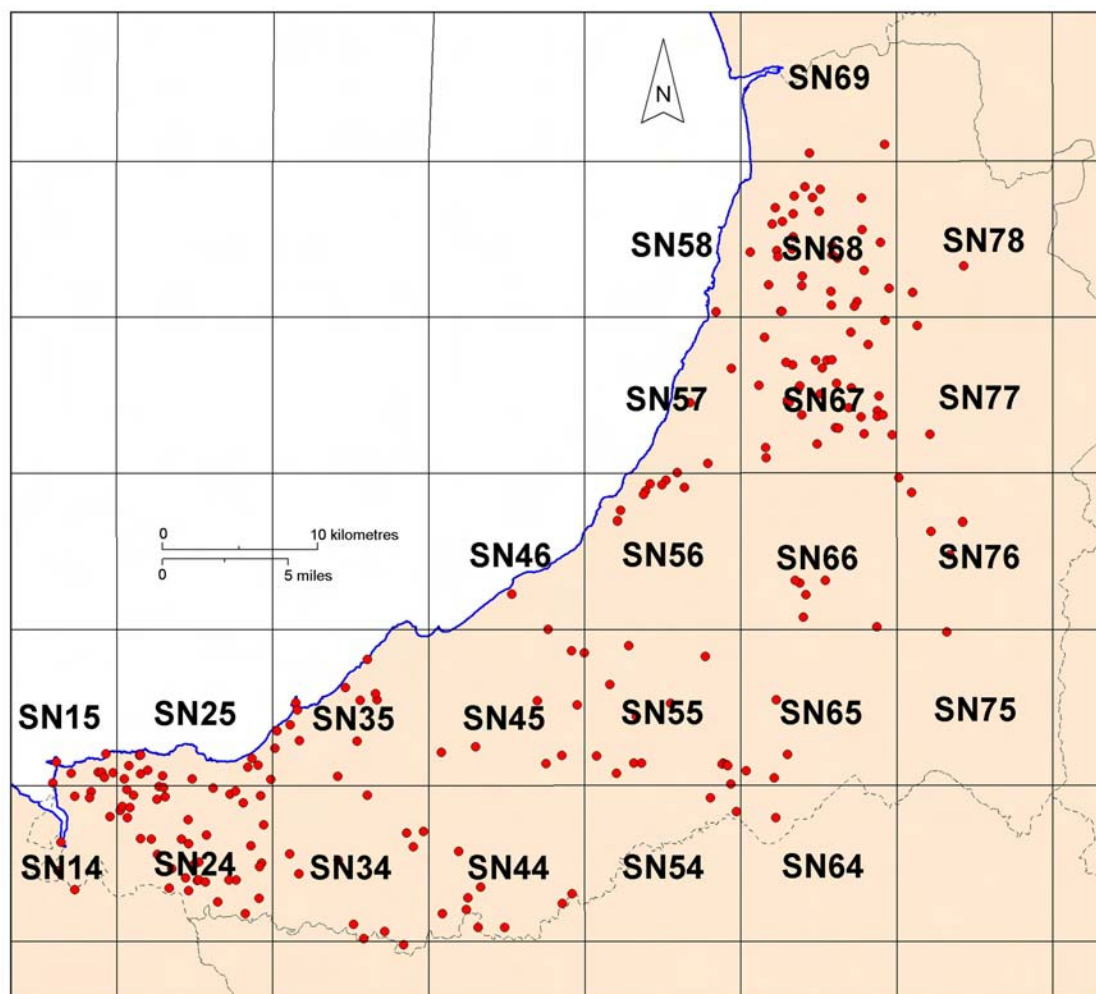
ARCHAEOLEG CAMBRIA
Ymddiriedolaeth Archaeolegol Dyfed Cyf
Neuadd y Sir, Stryd Caerfyrddin, Llandeilo, Sir Gaerfyrddin SA19
6AF
Ffon: Ymholiadau Cyffredinol 01558 823121
Adran Rheoli Treftadaeth 01558 823131
Ffacs: 01558 823133
Eboost: cambria@acadat.com Gwefan: www.acadat.com

CAMBRIA ARCHAEOLOGY
Dyfed Archaeological Trust Limited
The Shire Hall, Carmarthen Street, Llandeilo, Carmarthenshire
SA19 6AF
Tel: General Enquiries 01558 823121
Heritage Management Section 01558 823131
Fax: 01558 823133
Email: cambria@acadat.com Website: www.acadat.com

SITE GAZETTEER OF 10KM GRID SQUARES SN33 AND SN34

For ease of handling the site gazetteers have been arranged into Ordnance Survey 10km grid squares. Each gazetteer consists of one or more 1:50,000 maps showing the overall location of each site followed by the individual entries for each site. Each entry comprises: a printout from the Historic Environment Record, including a site description; a 1:500 map; and where available a ground photograph and an aerial photograph.

Many of the 1:500 maps show details of the site plotted from cropmarks shown on aerial photographs. These plots are supplied by RCAHMW Crown Copyright ©.



Index to the gazetteers of defended enclosures and related sites. Gazetteers are arranged by 10km grid squares.



1:50,000 Distribution map of sites in 10km grid square SN33.

This map is reproduced from the Ordnance Survey map by the National Assembly for Wales with the permission of The Controller of Her Majesty's Stationery Office. Crown Copyright. All rights reserved. Unauthorised reproduction infringes Crown Copyright and may lead to prosecution and civil proceedings. Licence No. GD 272221



1:50,000 Distribution map of sites in 10km grid square SN34.

This map is reproduced from the Ordnance Survey map by the National Assembly for Wales with the permission of The Controller of Her Majesty's Stationery Office. Crown Copyright. All rights reserved. Unauthorised reproduction infringes Crown Copyright and may lead to prosecution and civil proceedings. Licence No. GD 272221

2339 Y GAER

PRN 2339 NGR SN31654435

SITE NAME GAER Y

SITE TYPE PROMONTORY FORT FORM Earthwork

PERIOD Iron Age CONDITION C

SITE STATUS

DESCRIPTION

Y Gaer is a small promontory fort lying at 95m above sea level. It is naturally defended on three sides, north, east and south, but steep slopes, which fall away into a small valley. To the southwest the land rises gently from the site. This easily approachable side is defended by a bank, about 30m long, up to 0.8m high and 10m wide, with a slight trace of a ditch on its external (southwest side). The steep slopes and bank define a roughly triangular area 60m by 45m. A second, curving bank, c. 8m wide and 0.2m high, runs from the southwest to meet the main bank at a right angle at its northeast end. On aerial photographs this curving bank seems to form an annexe or horn-work outside the main defensive bank. In 2005, the site was under improved pasture.

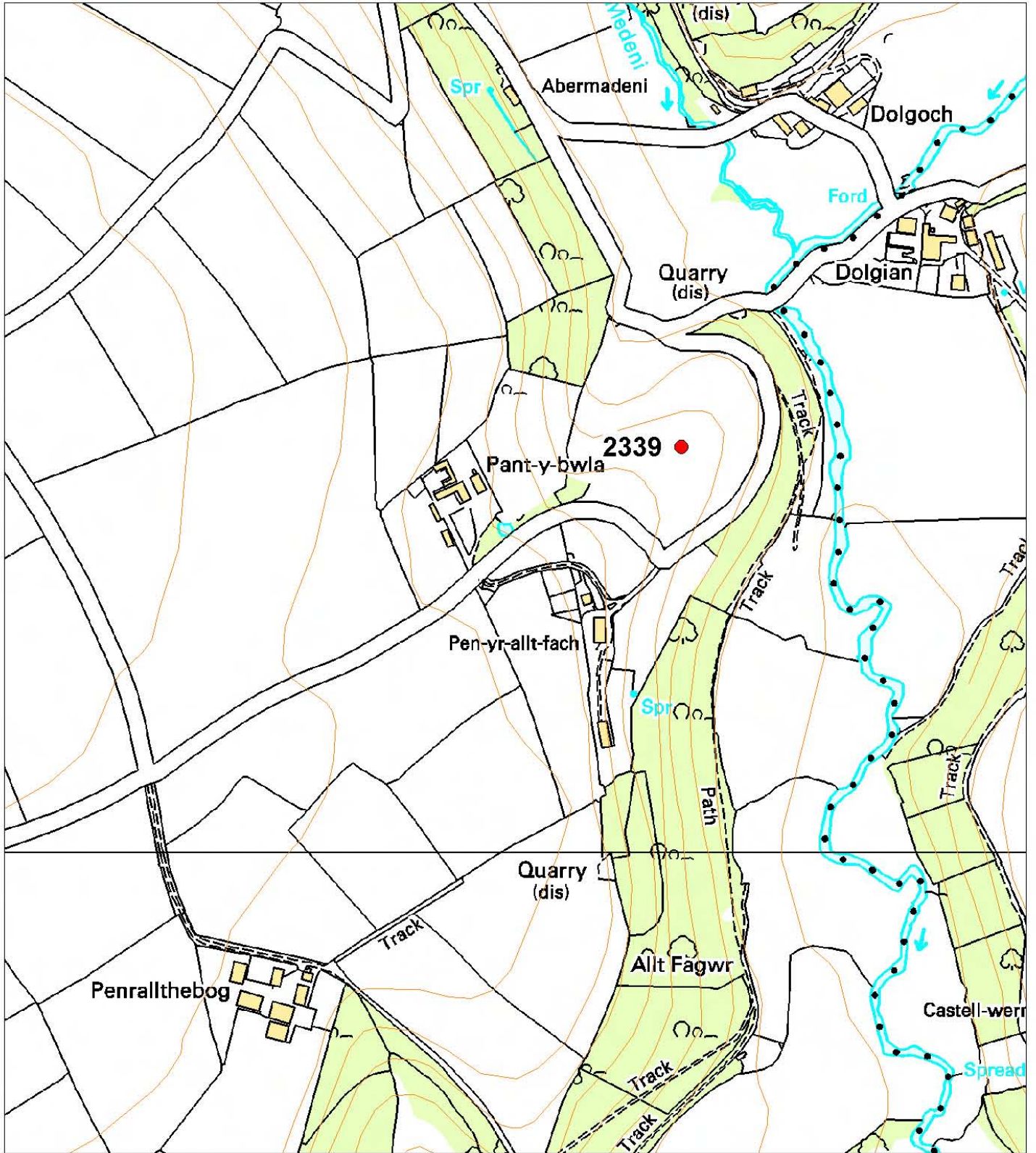
K Murphy 16 November 2005



Aerial photograph RCAHMW Crown Copyright © reference 2002.5094.53.



Ground photograph looking over earthworks.



This map is reproduced from the Ordnance Survey map by the National Assembly for Wales with the permission of The Controller of Her Majesty's Stationery Office. Crown Copyright. All rights reserved. Unauthorised reproduction infringes Crown Copyright and may lead to prosecution and civil proceedings. Licence No. GD 272221

Scale: 1:500

2341 CAERAU

PRN 2341 NGR SN358402

SITE NAME CAERAU;HENLLAN

SITE TYPE PROMONTORY FORT FORM Earthwork

PERIOD Iron Age CONDITION C

SITE STATUS

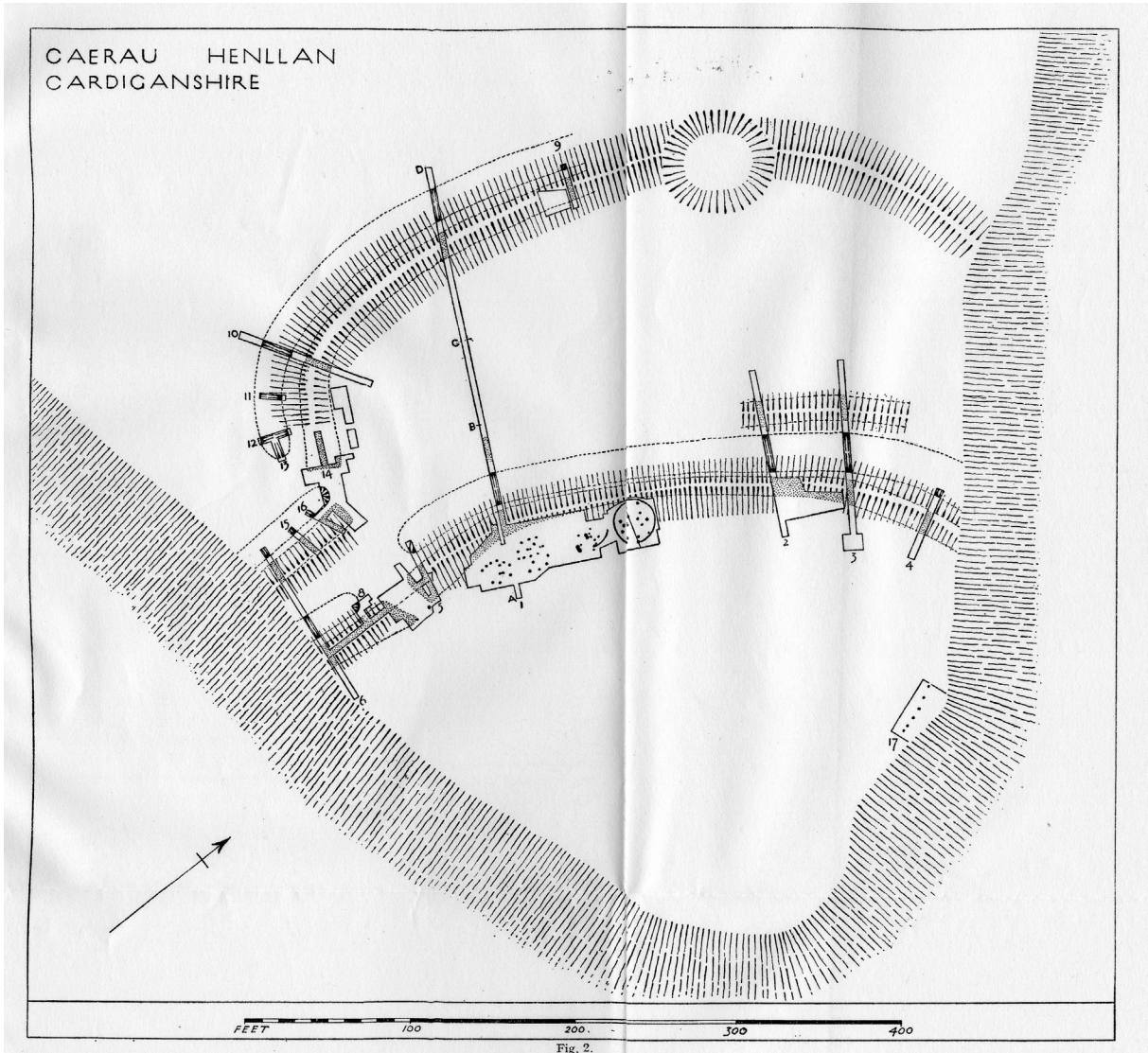
DESCRIPTION

Caerau is a bivallate promontory fort with a concentric annexe. It located on level ground at 60m above sea level on an inland promontory above the River Teifi. The site is naturally defended by steep slopes to the east and south and by defences to the north and west. These defences are levelled banks and ditches and stand no more than 0.5m between the tops of the banks and bottoms of the ditches. The inner bank defends a roughly triangular area 110m by 85m. It has a curving course from the edge of the steep slope on the northeast side to close to the edge of the steep slope on the south side. The entrance lies on the edge of this steep slope. The bank is about 12m - 15m wide with traces of an external ditch. Towards the northeast end a short length of bank, close to and concentric to the inner bank, marks the line of a second defensive circuit, making a bivallate fort. On surface evidence this bank is far shorter than the first. A bank 65m from the inner bank, concentric to it, and of similar dimensions defines an annexe. A hollow in this bank may mark the site of a pond.

The site was under improved pasture in 2005. A WW2 PoW camp (later holiday camp and industrial estate) lies immediately to the west of the site, and may have encroached on part of the annexe bank. Some rubbish pits have been dug on the eastern side of the fort interior. Apart from these intrusions, the fort seems to have changed little since the publication of the 1st Ordnance Survey 1:2500 map in the late 19th century.

An excavation published in 1945 by Audrey Williams revealed at least three round-houses behind the inner bank, plus other features on interest.

K Murphy 10 October 2005



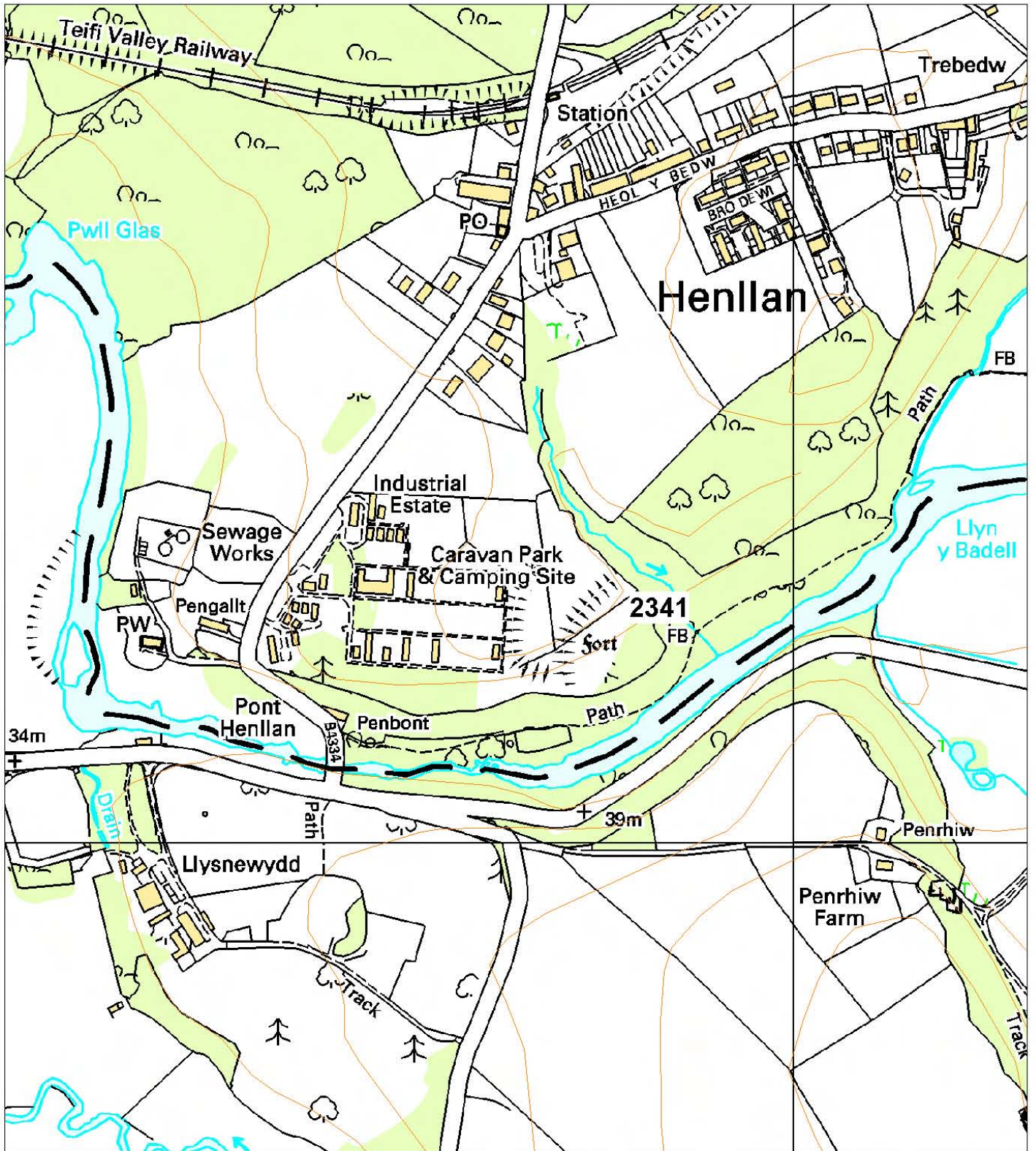
Plan of site from excavation report.



Aerial photograph Cambria Archaeology.



Ground photograph looking over earthworks.



This map is reproduced from the Ordnance Survey map by the National Assembly for Wales with the permission of The Controller of Her Majesty's Stationery Office. Crown Copyright. All rights reserved. Unauthorised reproduction infringes Crown Copyright and may lead to prosecution and civil proceedings. Licence No. GD 272221

Scale: 1:500

2343 FELIN-CWRRWS

PRN 2343 NGR SN35154112

SITE NAME FELIN-CWRRWS

SITE TYPE PROMONTORY FORT FORM Earthwork

PERIOD Iron Age CONDITION C

SITE STATUS SAM

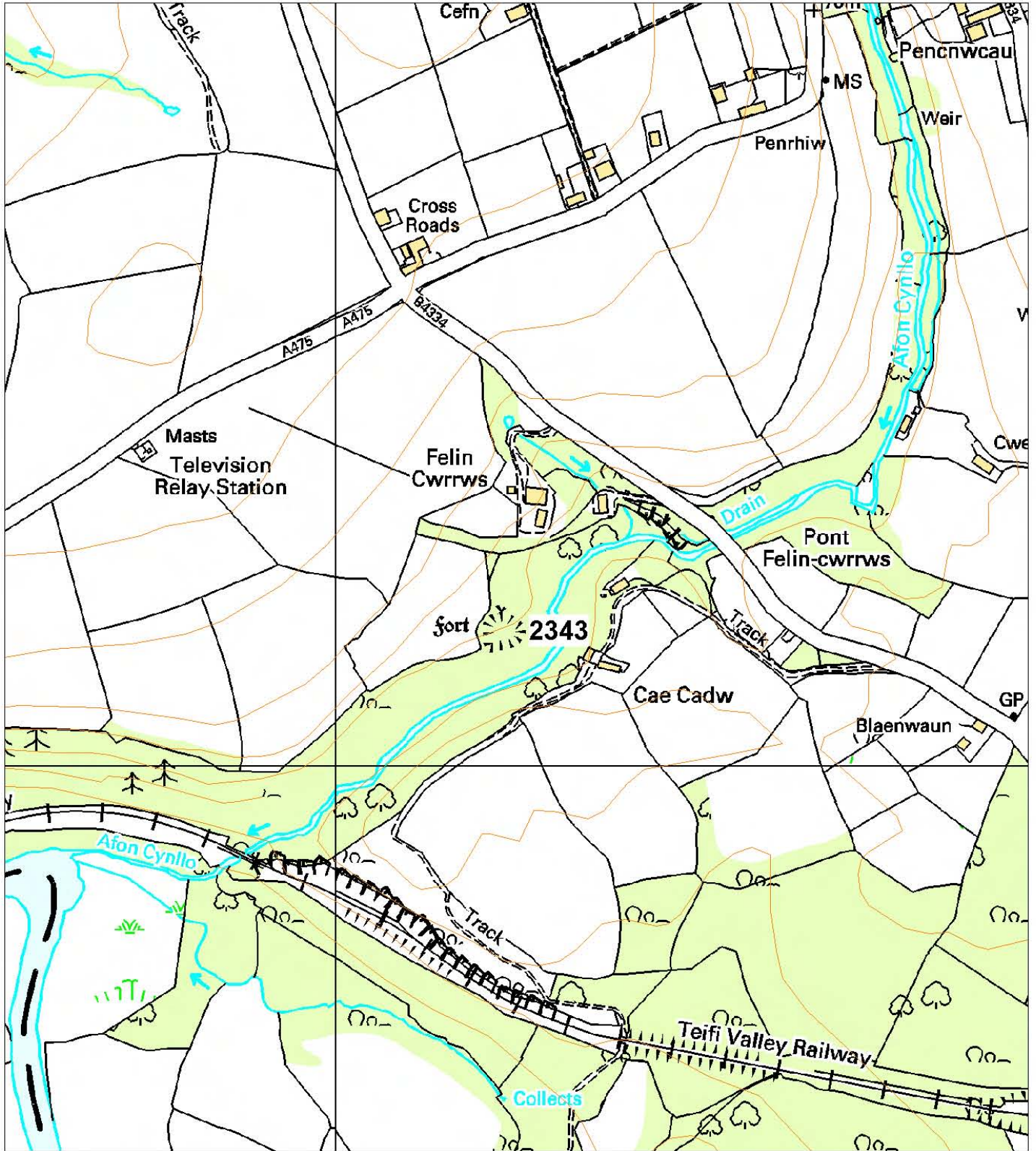
DESCRIPTION

Felin-cwrrws is a small promontory fort known locally as "Castell". It lies at 70m above sea level. To the north, east and south the fort is naturally well-defended by steep slopes that fall away in the valley of the Afon Cynllo. A 3m - 4m high curving bank flanked by a wide U-shaped ditch 1.5m deep defends the west side. There is no obvious entrance, but presumably it lies at one end of the bank against a steep slope. The triangular-shaped interior measures c. 30m by 25m. The interior is under woodland that has been coppiced at some time in the past, the bank and ditch is under more scrubby, brambly woodland.

K Murphy 13 December 2005 - compiled from Cadw and OS descriptions.



Aerial photograph Cambria Archaeology.



This map is reproduced from the Ordnance Survey map by the National Assembly for Wales with the permission of The Controller of Her Majesty's Stationery Office. Crown Copyright. All rights reserved. Unauthorised reproduction infringes Crown Copyright and may lead to prosecution and civil proceedings. Licence No. GD 272221

Scale: 1:500

3979 CRUGYBALOG

PRN 3979 NGR SN34184524

SITE NAME CRUGYBALOG

SITE TYPE DEFENDED ENCLOSURE? FORM Earthwork

PERIOD Iron Age CONDITION D

SITE STATUS

DESCRIPTION

Crugybalog enclosure occupies the summit of a low, rounded hill at 245m above sea level. It is not a strongly naturally defended location, nevertheless, land drops away steadily in all directions. There is only a slight rise suggesting the line of defences, which is overlain by hedge-banks, masking any detail. There is no trace of an external ditch and no obvious entrance. The hedge-banks define a roughly oval area 130m east to west and 90m north to south. In 2005, the site was under improved pasture.

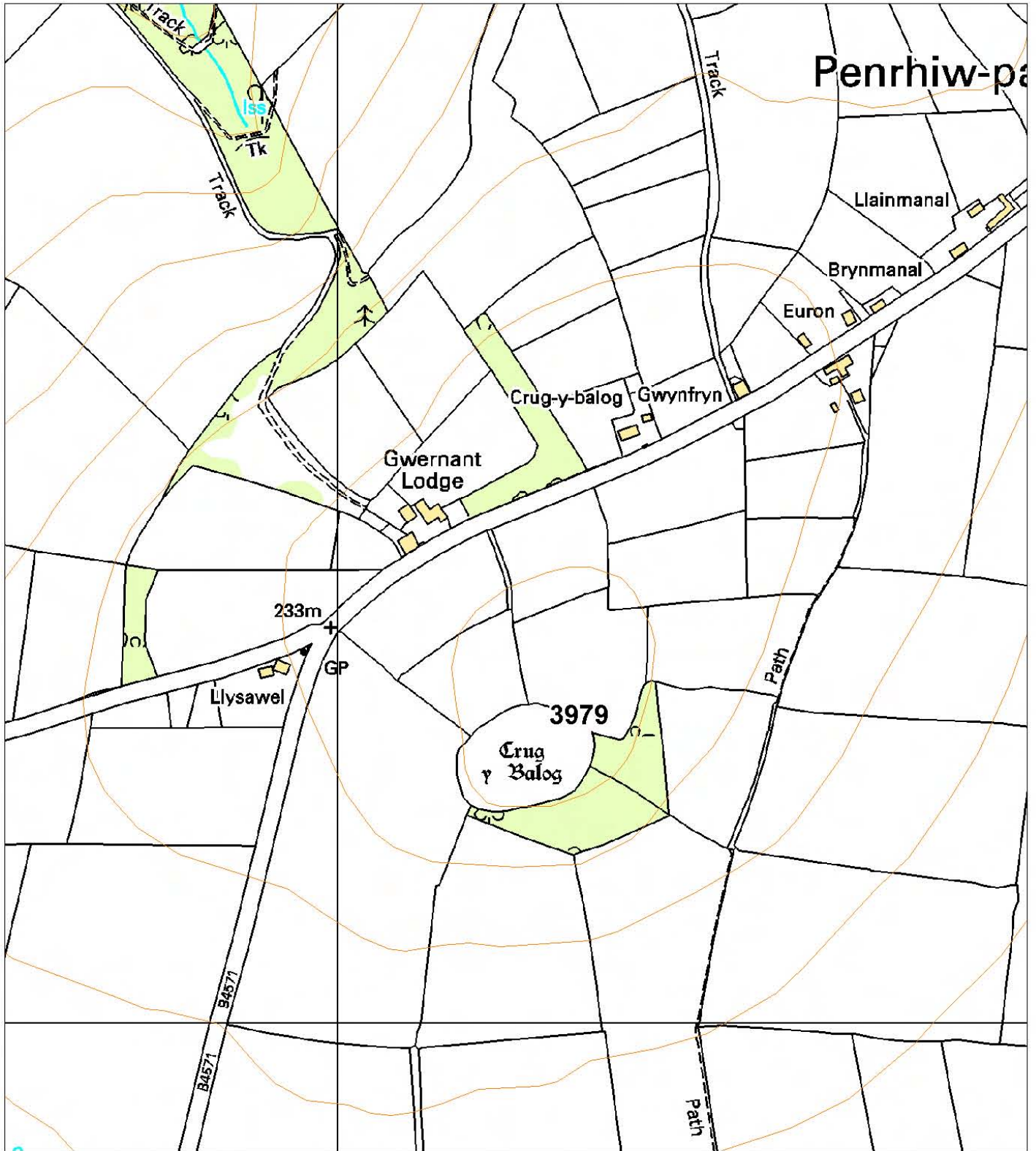
K Murphy 17 November 2005



Aerial photograph RCAHMW Crown Copyright © reference 2005-cs-1078.



Ground photograph looking towards Crugybalog.



This map is reproduced from the Ordnance Survey map by the National Assembly for Wales with the permission of The Controller of Her Majesty's Stationery Office. Crown Copyright. All rights reserved. Unauthorised reproduction infringes Crown Copyright and may lead to prosecution and civil proceedings. Licence No. GD 272221

Scale: 1:500

3982 DINASCERDIN

PRN 3982 NGR SN38574697

SITE NAME DINASCERDIN

SITE TYPE HILLFORT FORM Earthwork

PERIOD Iron Age CONDITION B

SITE STATUS SAM;ACK

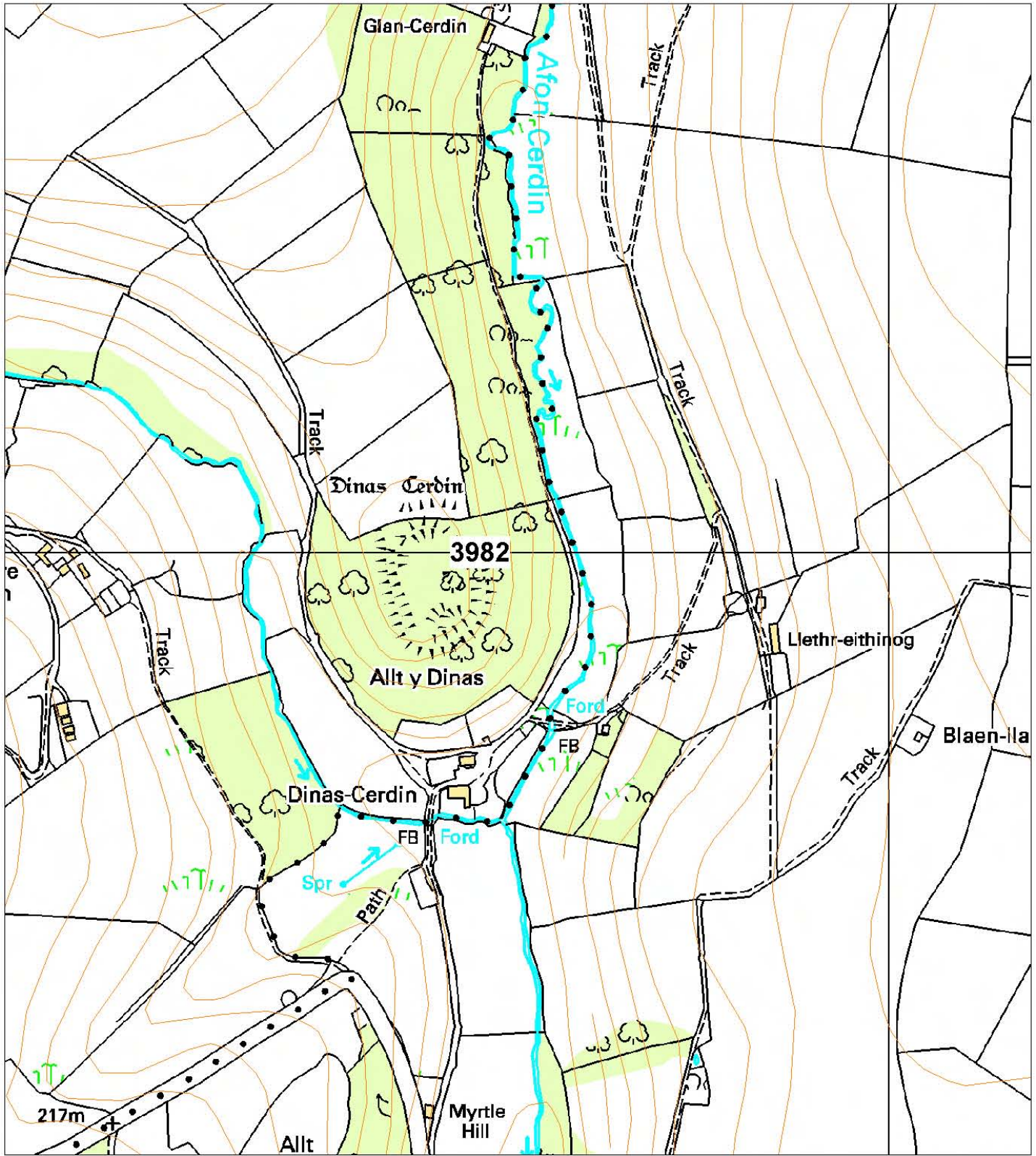
DESCRIPTION

Dinas Cerdin occupies a knoll at the end of an inland promontory at 200m above sea level. The site is well defended on three sides by steep valley sides, but to the north the land falls away slightly from the site into a saddle before gently rising to a rounded summit 750m distant. A defensive circuit encloses a sub-rectangular area c. 95m by 65m. This circuit changes character: above the steep valley side, to the west, south and east a scarp to 4m high has been carved out of the steep slope with a terrace at its foot. The terrace is probably the remains of a silted ditch. However, on the north side a bank cuts off the access to the promontory. A simple entrance with club-ends (with traces of stone walling according to the Ordnance Survey in 1974) to the bank lies towards the western end of the north side. A second line of defensive bank lies to the north of the inner bank. The interior is undulating and incorporates the summit of the hill. At least six hollows on the south side may represent the location of round-houses. The site is under rough grazing with much bracken and some gorse.

K Murphy 13 December 2005 - from Cadw and Ordnance Survey descriptions.



Aerial photograph Cambria Archaeology.



This map is reproduced from the Ordnance Survey map by the National Assembly for Wales with the permission of The Controller of Her Majesty's Stationery Office. Crown Copyright. All rights reserved. Unauthorised reproduction infringes Crown Copyright and may lead to prosecution and civil proceedings. Licence No. GD 272221

Scale: 1:500

5274 CAERAU

PRN 5274 NGR SN36054940

SITE NAME CAERAU;PEN Y GAR

SITE TYPE PROMONTORY FORT FORM Earthwork

PERIOD Iron Age CONDITION C

SITE STATUS SAM

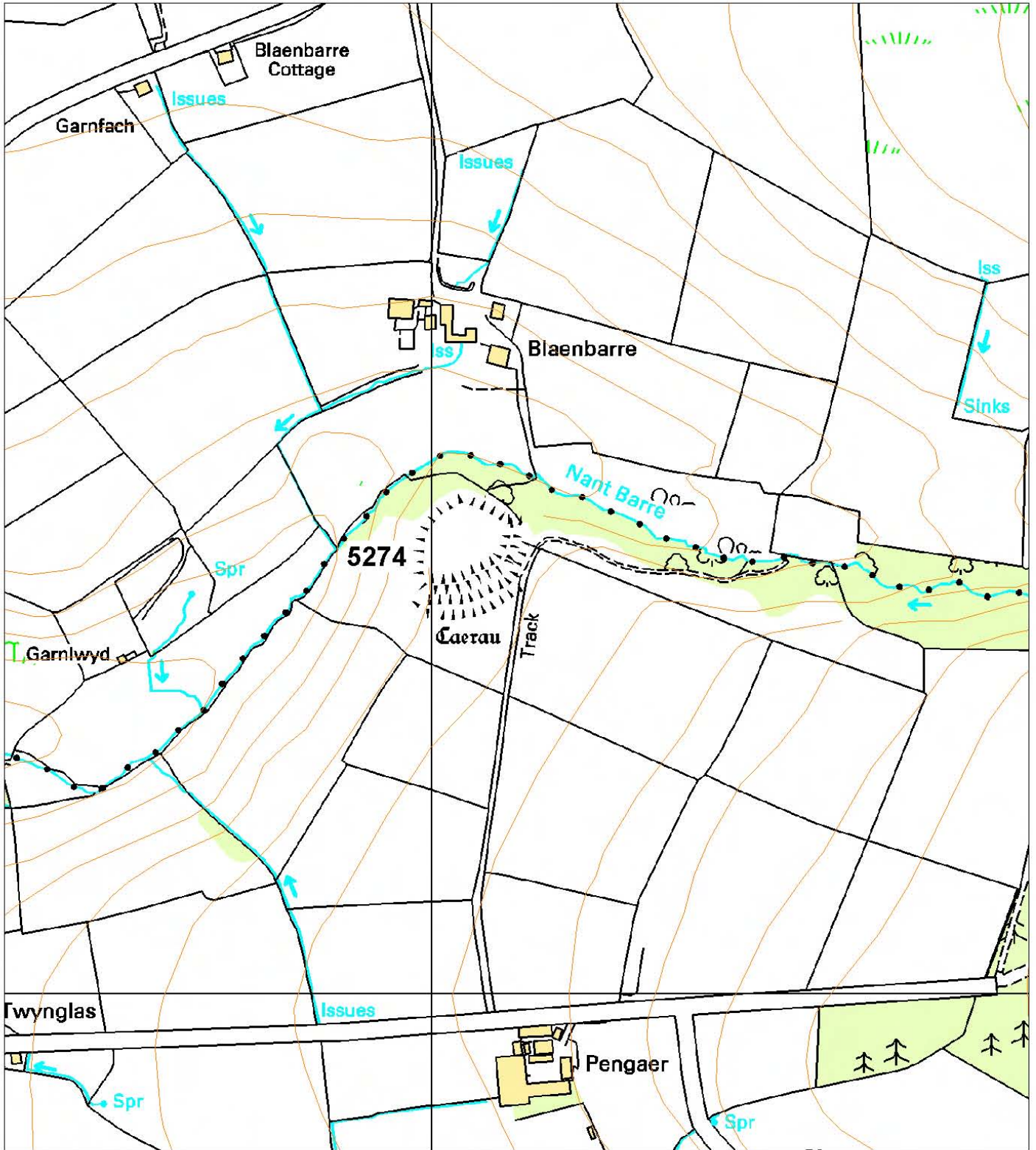
DESCRIPTION

Caerau is a fort located on an inland promontory at 210m above sea level. To the north and west the site is naturally defended by steep valley sides falling away by 20m - 30m. To the south and east of the site the land continues to rise to a rounded summit some distance away. It is a bivallate promontory fort, defended on the easily approachable south and east side by two banks and ditches, but with no obvious built defences to the north and west. The defences are much reduced on the south side and now only survive to a maximum bank height of 0.9m and a ditch depth of 0.5m. At the western end the defence consists of a scarping of low bluff, rather than a true bank. On the east side the banks stand up to 4m high. There is no obvious entrance, but it was probably on the reduced south side. The interior is slightly domed, but otherwise featureless. The interior is under pasture and the banks bracken and gorse covered.

K Murphy 14 December 2005 - from Cadw and Ordnance Survey descriptions.



Aerial photograph Cambria Archaeology.



This map is reproduced from the Ordnance Survey map by the National Assembly for Wales with the permission of The Controller of Her Majesty's Stationery Office. Crown Copyright. All rights reserved. Unauthorised reproduction infringes Crown Copyright and may lead to prosecution and civil proceedings. Licence No. GD 272221

Scale: 1:500

5275 GAER TROED-Y-RHIW

PRN 5275 NGR SN39004610

SITE NAME GAER TROED-Y-RHIW

SITE TYPE DEFENDED ENCLOSURE FORM Earthwork

PERIOD Iron Age; Roman CONDITION C

SITE STATUS

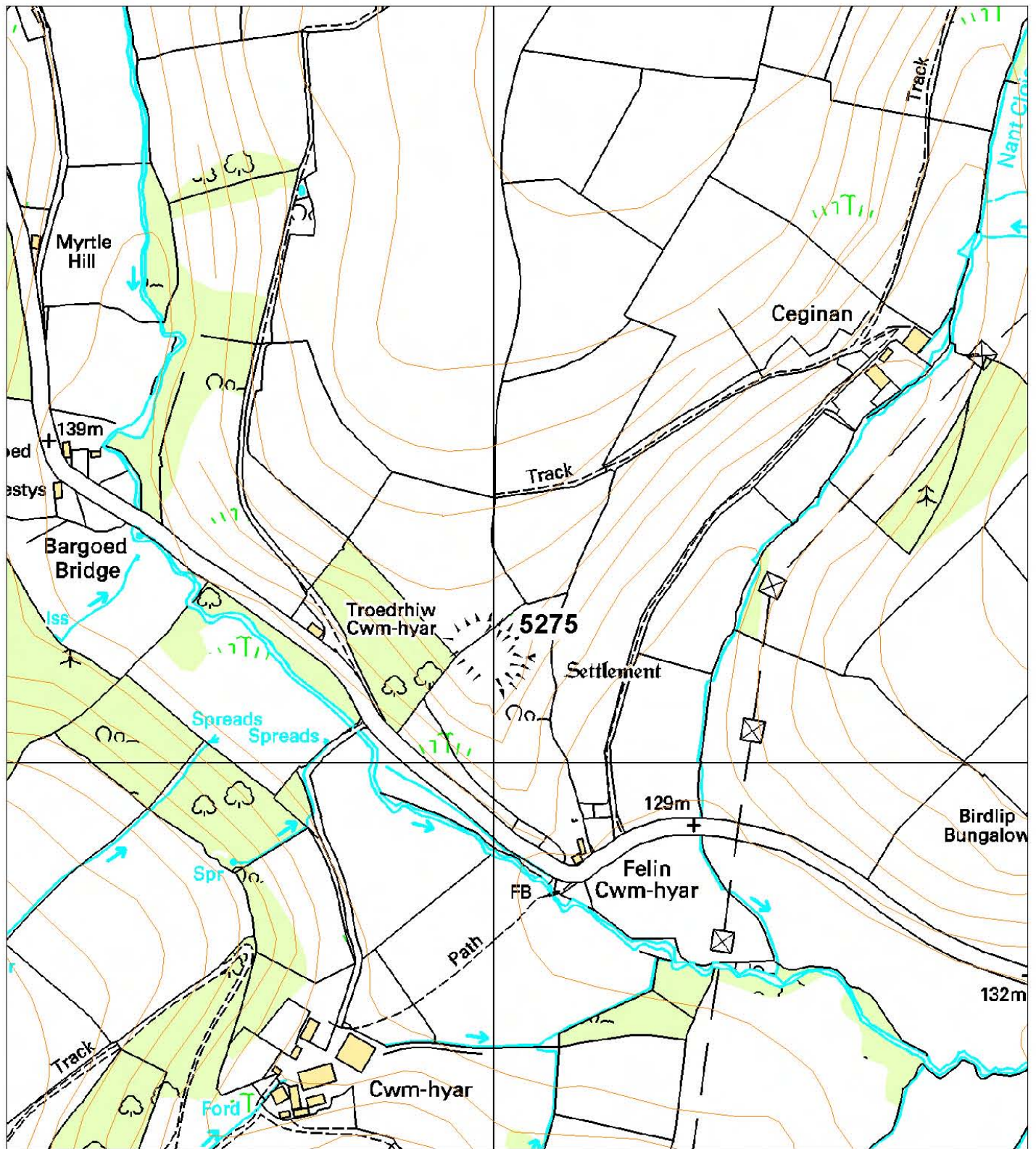
DESCRIPTION

Gaer is a small earthwork enclosure located on an inland promontory at 170m above sea level. To the east, south and west land falls steeply away from the site, but to the northwest the ground climbs gently steady to a over 250m. The site is overlooked from the northwest. In 2005, the site was found be under dense scrub cover (except the northwest side), and none of the earthworks previously recorded could be defined with confidence, although it would seem that most are still present. Therefore, the following description is taken from a 1975 account by the Ordnance Survey. It is a sub-rectangular enclosure approximately 60m southeast to northwest and 40m southwest to northeast. The site is defined on its southwest and southeast sides by a scarped slope 2m - 3m high, and to the northwest and northeast by a low bank (in 2005 the northwest side lay in improved pasture, but only a very low and indistinct earthwork up to 0.2m high of the bank recorded by the OS could be made out). A simple entrance lies in the east corner with an external platform.

K Murphy 16 November 2005



Ground photograph - distant view of site of enclosure.



This map is reproduced from the Ordnance Survey map by the National Assembly for Wales with the permission of The Controller of Her Majesty's Stationery Office. Crown Copyright. All rights reserved. Unauthorised reproduction infringes Crown Copyright and may lead to prosecution and civil proceedings. Licence No. GD 272221

Scale: 1:500

7317 GAER WEN

PRN 7317 NGR SN39640470

SITE NAME GAER WEN; GARN WEN

SITE TYPE PROMONTORY FORT FORM Earthwork

PERIOD Iron Age CONDITION C

SITE STATUS

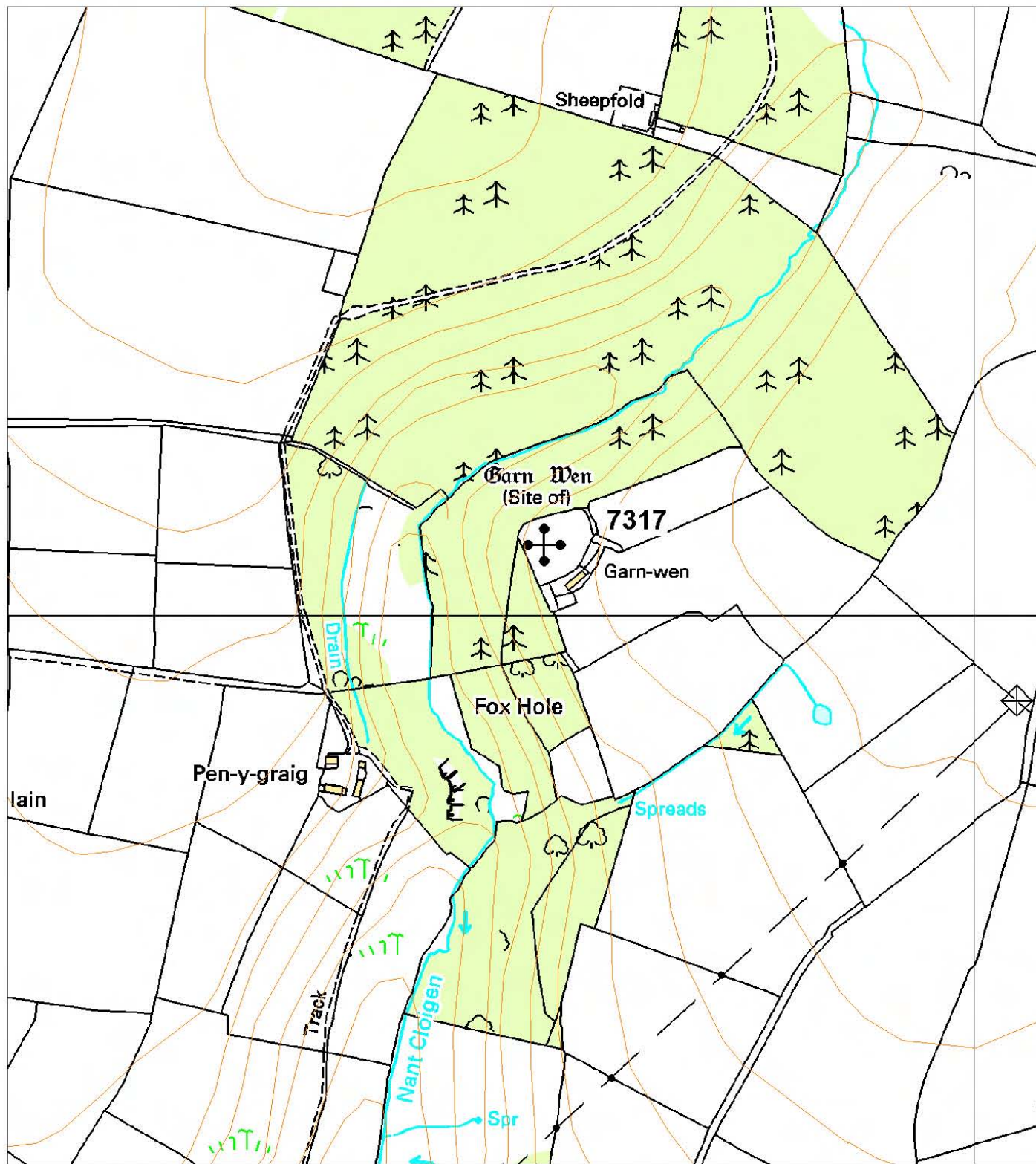
DESCRIPTION

Gaer wen is a small inland promontory fort located at 250m above sea level. The site is naturally well-defended to the north, west and southwest by steep slopes, which fall away to a small stream 50m below. To the east and southeast the approach to the fort is fairly level. A curving length of bank defends this side. The defended area is triangular in shape, approximately 65m by 65m. The defensive bank is now very damaged. A small cottage was built against the bank in the late 19th century/early 20th century - this is now ruined - and a start was made in building a new house here in the second half of the 20th century, but work was abandoned and the building levelled. Small paddocks and a field boundary concentric to the defensive bank accompanied the cottage. The bank itself is c. 5m wide and up to 1.8m high. It is constructed entirely from fist-sized stones, with very little earth. It is now discontinuous with several wide gaps. One of these was created in c. 1990 when a c. 8m length was quarried for stones for road hardcore. Immediately outside the bank is a cattle-feeding station, with rubble spread around for hard-standing. There is no evidence for a ditch external to the bank. The gently sloping interior is under improved pasture and in good condition. Information from the landowner during a site visit.

K Murphy 16 November 2005



Ground photograph looking along earthwork defences.



This map is reproduced from the Ordnance Survey map by the National Assembly for Wales with the permission of The Controller of Her Majesty's Stationery Office. Crown Copyright. All rights reserved. Unauthorised reproduction infringes Crown Copyright and may lead to prosecution and civil proceedings. Licence No. GD 272221

Scale: 1:500

7718 BRYN TEIFI

PRN 7718 NGR SN38383980

SITE NAME BRYN TEIFI

SITE TYPE DEFENDED ENCLOSURE FORM Cropmark

PERIOD Iron Age?;Roman? CONDITION D

SITE STATUS

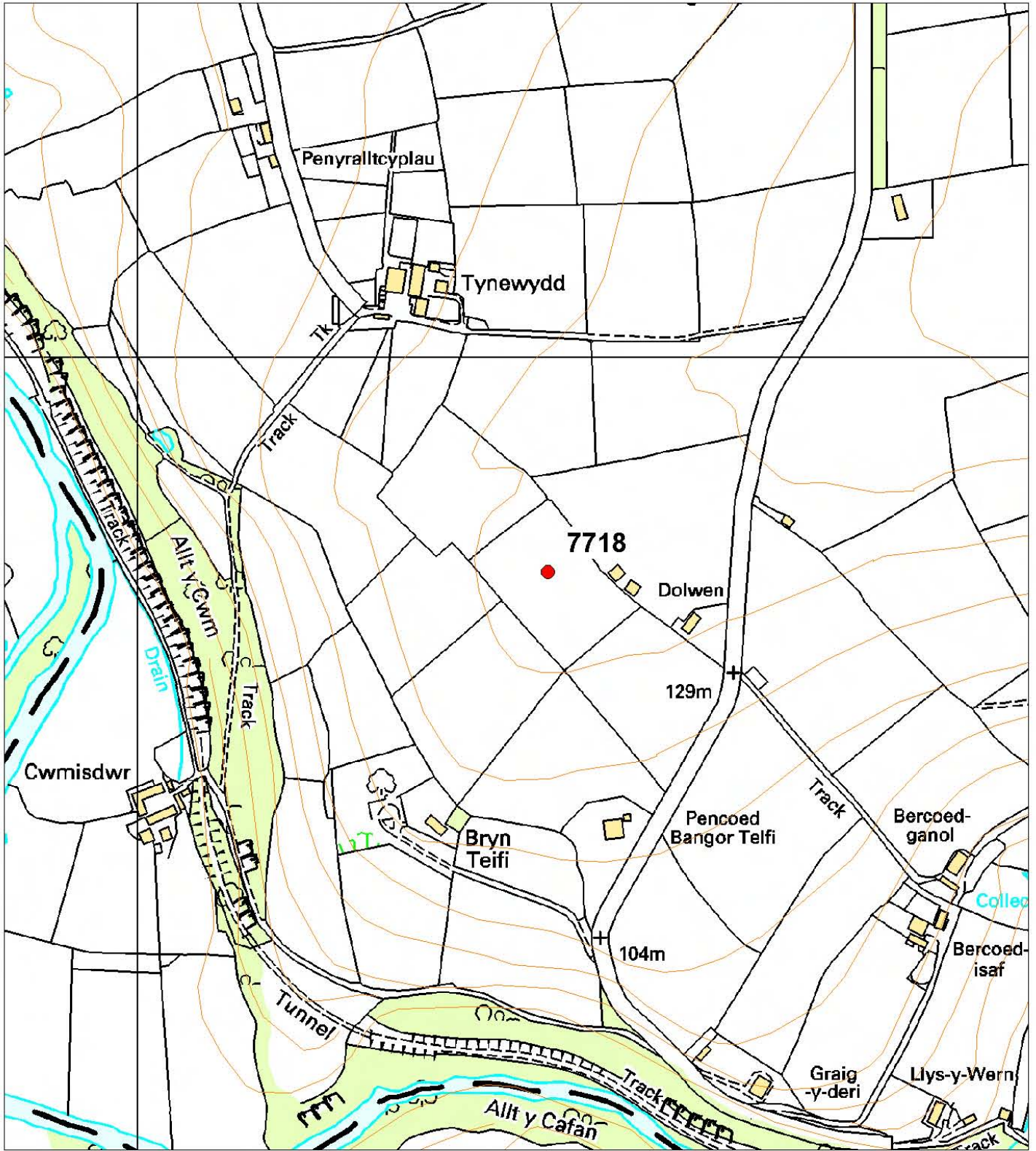
DESCRIPTION

Located on level ground on a break of slope and commanding wide-ranging views over the Teifi valley to the north, west and south, Bryn Teifi is cropmark site with no earthwork or other surface evidence. Aerial photographs show a sub-rectangular, almost sub-square enclosure, approximately 25m - 30m across, defined by a cropmark ditch. A gap in the ditch on the northeast side marks the location of an entrance.

K Murphy 16 November 2005



Ground photograph looking over site of cropmark enclosure.



This map is reproduced from the Ordnance Survey map by the National Assembly for Wales with the permission of The Controller of Her Majesty's Stationery Office. Crown Copyright. All rights reserved. Unauthorised reproduction infringes Crown Copyright and may lead to prosecution and civil proceedings. Licence No. GD 272221

Scale: 1:500

35739 PANTYRODYN

PRN 35739 NGR SN31064564

SITE NAME PANTYRODYN

SITE TYPE DEFENDED ENCLOSURE? FORM Cropmark

PERIOD Iron Age?; Roman? CONDITION D

SITE STATUS

DESCRIPTION

A right angle length of cropmark ditch is visible on aerial photographs in the corner of a field. It measures no more than 25m north - south and 15m east - west. There are traces of the ditch continuing as a faint cropmark in the field to the east. It is possibly one corner of a rectangular enclosure, but until a more complete cropmark is visible this interpretation cannot be confirmed. The site lies on a gentle southwest-facing slope in improved pasture.

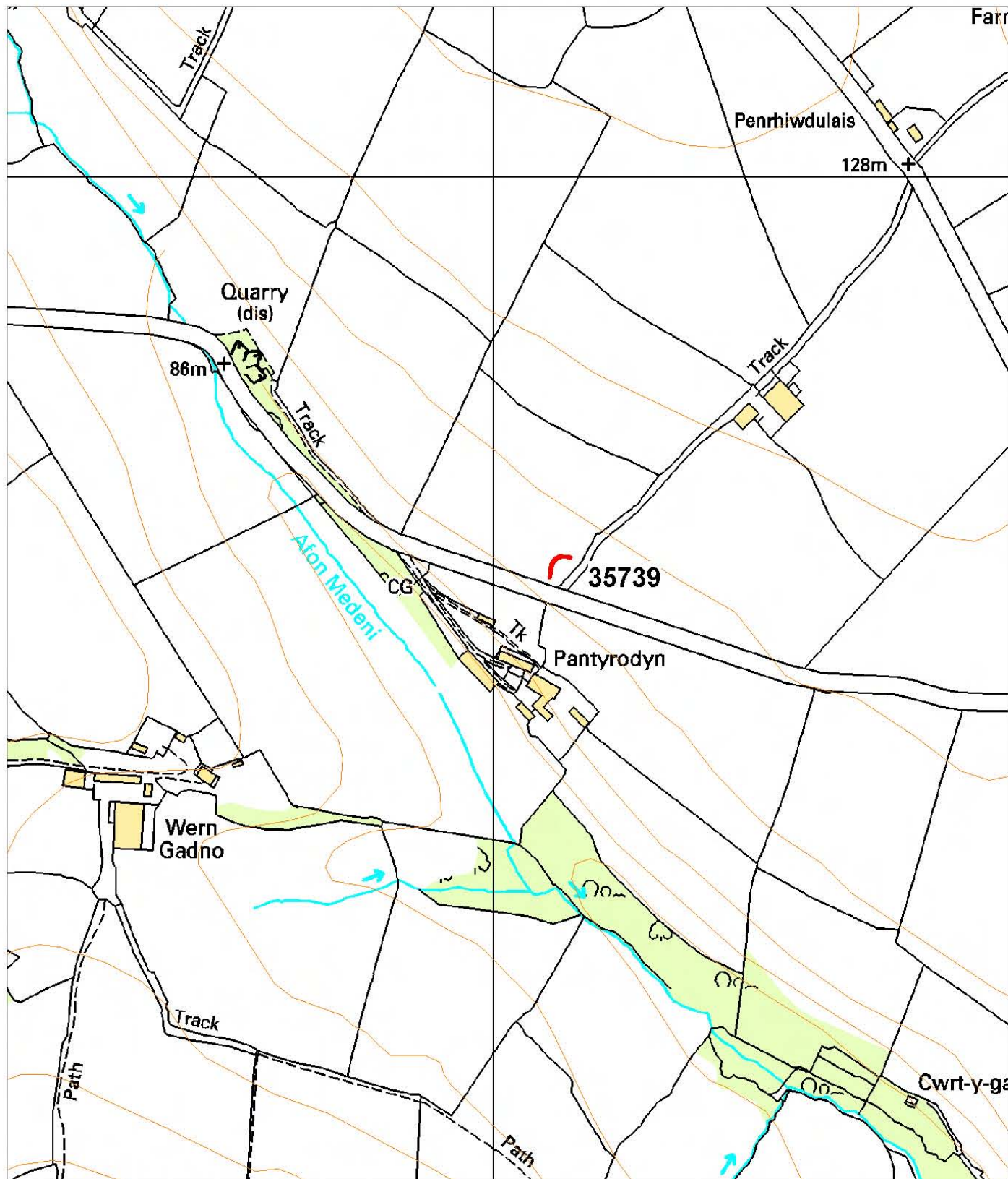
K Murphy 16 November 2005



Aerial photograph RCAHMW Crown Copyright © reference 895050.16



Ground photograph looking over site of cropmark.



This map is reproduced from the Ordnance Survey map by the National Assembly for Wales with the permission of The Controller of Her Majesty's Stationery Office. Crown Copyright. All rights reserved. Unauthorised reproduction infringes Crown Copyright and may lead to prosecution and civil proceedings. Licence No. GD 272221

Scale: 1:500

52066 PENRALLT FACHNOG

PRN 52066 NGR SN37164065

SITE NAME PENRALLT-FACHNOG

SITE TYPE PALISADED ENCLOSURE?DEFENDED ENCLOSURE? FORM
Cropmark

PERIOD Prehistoric; Iron Age CONDITION D

SITE STATUS

DESCRIPTION

An arc of a narrow curving cropmark ditch, c. 150m long, is visible on aerial photographs. If projected the arc would form a circle approximately 70m in diameter. It is a narrow cropmark, indicating a small ditch or possibly a palisade. The site is located in a prominent position at 130m above sea level on gently sloping ground. To the east, south and southwest of the site land falls away sharply down to the River Teifi. To the north the land rises gently a few metres on to rounded hilltop. In 2005, the site was under improved pasture.

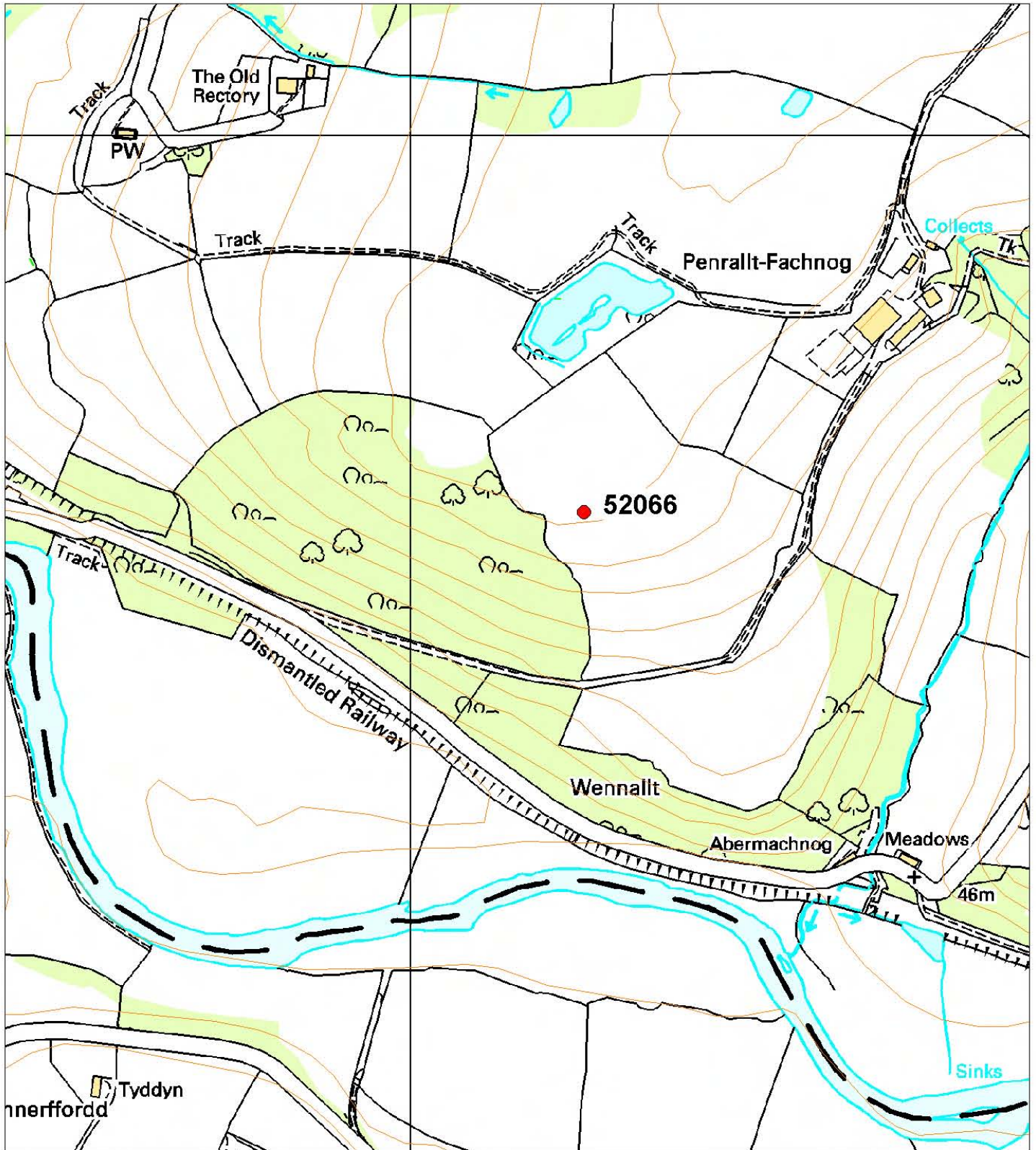
K Murphy 16 November 2005



Aerial photograph RCAHMW Crown Copyright ©.



Ground photograph - distant view of site of cropmark.



This map is reproduced from the Ordnance Survey map by the National Assembly for Wales with the permission of The Controller of Her Majesty's Stationery Office. Crown Copyright. All rights reserved. Unauthorised reproduction infringes Crown Copyright and may lead to prosecution and civil proceedings. Licence No. GD 272221

Scale: 1:500