

# FAN BRYCHEINIOG, BRECON BEACONS, POWYS ARCHAEOLOGICAL EVALUATION 2017



*Excavating the trench across Fan Brycheiniog mound with Llyn y Fan Fawr in the background.*

Prepared by Dyfed Archaeological Trust  
For: Cadw



ymddiriedolaeth archaeolegol  
**DYFED**  
archaeological trust

**DYFED ARCHAEOLOGICAL TRUST**

REPORT NO. 2017/50  
EVENT RECORD NO. CPAT142656

CADW PROJECT NO. DAT 146

Hydref 2017  
October 2017

**FAN BRYCHEINIOG,  
BRECON BEACONS, POWYS  
ARCHAEOLOGICAL  
EVALUATION 2017**

Gan / By

**Fran Murphy & H Wilson**

The copyright of this report is held by Cadw and Dyfed Archaeological Trust Ltd.

The maps are based on Ordnance Survey mapping provided by the National Assembly for Wales with the permission of the Controller of Her Majesty's Stationary Office, Crown Copyright. All rights reserved. Unauthorised reproduction infringes Crown Copyright and may lead to prosecution or civil proceedings. License No.: 100017916 (2014).

Historic mapping reproduced here is covered under Crown Copyright and Landmark Information Group. All rights reserved. Dyfed Archaeological Trust Ltd. On behalf of Welsh Government 2014.

Scheduled Ancient Monument polygon data in this report is based on Cadw's Historic Assets Data. Crown Copyright. Cadw.



Llywodraeth Cymru  
Welsh Government

Ymddiriedolaeth Archaeolegol Dyfed Cyf  
Corner House, 6 Stryd Caerfyrddin, Llandeilo,  
Sir Gaerfyrddin SA19 6AE  
Ffon: Ymholiadau Cyffredinol 01558 823121  
Adran Rheoli Treftadaeth 01558 823131  
Ebost: [info@dyfedarchaeology.org.uk](mailto:info@dyfedarchaeology.org.uk)  
Gwefan: [www.archaeolegdyfed.org.uk](http://www.archaeolegdyfed.org.uk)

*Dyfed Archaeological Trust Limited*  
Corner House, 6 Carmarthen Street, Llandeilo,  
Carmarthenshire SA19 6AE  
Tel: General Enquiries 01558 823121  
Heritage Management Section 01558 823131  
Email: [info@dyfedarchaeology.org.uk](mailto:info@dyfedarchaeology.org.uk)  
Website: [www.dyfedarchaeology.org.uk](http://www.dyfedarchaeology.org.uk)

*Cwmni cyfyngedig (1198990) ynghyd ag elusen gofrestredig (504616) yw'r Ymddiriedolaeth.  
The Trust is both a Limited Company (No. 1198990) and a Registered Charity (No. 504616)  
CADEIRYDD CHAIRMAN: Professor B Burnham. CYFARWYDDWR DIRECTOR: K Murphy BA MIFA*

**FAN BRYCHEINIOG,  
BRECON BEACONS, POWYS  
ARCHAEOLOGICAL EVALUATION 2017**

**CONTENTS**

<b>CRYNODEB</b>	1
<b>SUMMARY</b>	1
<b>1. INTRODUCTION</b>	2
<b>1.1 Project Commission</b>	2
<b>1.2 Scope of Project</b>	2
<b>1.3 Report Outline</b>	2
<b>1.4 Abbreviations</b>	2
<b>1.5 Illustrations</b>	3
<b>1.6 Timeline</b>	3
<b>2. THE SITE</b>	5
<b>2.1 Site Location and Topography</b>	5
<b>2.2 Archaeological Background</b>	5
<b>3. ARCHAEOLOGICAL EVALUATION</b>	9
<b>3.1 Methodology</b>	9
<b>4. RESULTS</b>	11
<b>5. CONCLUSIONS</b>	16
<b>6. PHOTOGRAPHS</b>	17
<b>7. SOURCES</b>	27

<b>APPENDIX I: Project Archive</b>	28
------------------------------------	----

**FIGURES**

<b>Figure 1:</b> Location map of Fan Brycheiniog mound	4
<b>Figure 2:</b> Archaeological and historical sites recorded on the Dyfed and CPAT HER that lie in the vicinity of Fan Brycheinoig	7
<b>Figure 3:</b> Sketch showing proposed area of excavation	10
<b>Figure 4:</b> Plan showing the trench and northwest quadrant that were investigated during the evaluation	13
<b>Figure 5:</b> The southwest facing section of the evaluation trench	14
<b>Figure 6:</b> Profiles through the surviving mound of Fan Brycheiniog	15

**TABLES**

<b>Table 1:</b> Archaeological and Historical Timeline for Wales	.3
<b>Table 2:</b> Archaeological and historical sites recorded on the Dyfed	

and CPAT HER that lie in the vicinity of Fan Brycheinoig 8

**PHOTOGRAPHS**

<b>Photo 1:</b>	Photograph of the site showing the possible kerb and mound exposed by visitor erosion	6
<b>Photo 2:</b>	Photograph of the low mound of Fan Brycheiniog situated on the edge of the steep southeast facing escarpment	6
<b>Photo 3:</b>	The northwest quadrant of the mound prior to turf removal	17
<b>Photo 4:</b>	Cleaning the earthwork after removal of turf in the NW quadrant	17
<b>Photo 5:</b>	Overhead photograph of the cleaned northwest quadrant of the mound showing the cairn material and outer stone kerb	18
<b>Photo 6:</b>	The outer stone kerb	18
<b>Photo 7:</b>	The cleaned northwest quadrant showing the darker mound material bounded by the stone kerb	19
<b>Photo 8:</b>	The narrow trench across Fan Brycheiniog mound after initial removal of turf and topsoil	20
<b>Photo 9:</b>	The southern end of the trench showing the contrasting colours between the darker buried turf material and the lighter surrounding sandstone bedrock	20
<b>Photo 10:</b>	The evaluation trench at the end of day 2	21
<b>Photo 11:</b>	The southwest facing section at the very northern end of the evaluation trench showing the compressed layers of buried turfs	21
<b>Photo 12:</b>	The southwest facing section at the northern end of the evaluation trench showing the compressed layers of buried turfs above the pitched stone	22
<b>Photo 13:</b>	The southwest facing section at the southern end of the evaluation trench showing the compressed layers of buried turfs above the pitched stone	22
<b>Photo 14:</b>	The southern end of the evaluation trench showing the remnant of dark soil (105) protruding from under the stone kerb	23
<b>Photo 15:</b>	The northern end of the trench showing the stone kerb	23
<b>Photo 16:</b>	The revealed pitched stone of the stone cairn at the southern end of the trench	24
<b>Photo 17:</b>	Detail of the more level stone within the northern end of the trench	24
<b>Photo 18:</b>	The absence of stone seen in the centre of the trench which may be evidence of a cut through the mound	25
<b>Photo 19:</b>	Detail of the stone kerb at the southern end of the evaluation trench showing the remnant of dark soil (105) protruding from under the kerb	25
<b>Photo 20:</b>	Detail of the stone kerb at the northern end of the evaluation trench	26
<b>Photo 21:</b>	The backfilled trench at the end of the excavation	26

**FAN BRYCHEINIOG,  
BRECON BEACONS, POWYS  
ARCHAEOLOGICAL EVALUATION 2017**

**CRYNODEB**

*Ym mis Mehefin 2016, canfuwyd beddrod crwn posibl, nad oedd wedi cael ei weld o'r blaen, o dan un o bwyntiau arolygu yr Arolwg Ordnans yn Fan Brycheiniog, sef un o'r mannau uchaf ym Mharc Cenedlaethol y Bannau Brycheiniog, 802 metr uwchben lefel y môr. Roedd erydiad difrifol o ganlyniad i ymwelwyr yn effeithio ar ochr orllewinol y beddrod posibl, gan ddatgelu pentwr caregog, wedi'i amgylchynu gan gerrig mawr o dan y pwynt arolygu. Penderfynwyd cynnal cloddiad bach er mwyn dadansoddi a nodweddu'r safle. Gwnaed hyn dros dridiau ym mis Mai 2017. Dangosodd bod y safle bron yn sicr o fod yn feddrod crwn o'r Oes Efydd wedi'i wneud o bentwr isel o gerrig wedi'i orchuddio gan bentwr o bridd, ac wedi'i amgylchynu gan gerrig mawr â diamedr o tua 8 metr. Mae'r safle o ansawdd digon uchel i gael ei ddynodi'n Heneb Gofrestredig. Dylid trwsio'r difrod a achoswyd gan ymwelwyr.*

**SUMMARY**

*In June 2016 what was possibly a previously unrecognised round barrow was noted beneath an Ordnance Survey trig point at Fan Brycheiniog, a high point in the Brecon Beacons National Park at 802m above sea level. Severe visitor erosion was affecting the west side of the possible barrow, revealing a stony mound edged by a kerb of large stones beneath the trig point. A decision was taken to carry out a small evaluation excavation to characterise the site. This was done over three days in May 2017. It demonstrated that the site was almost certainly a Bronze Age round barrow consisting of a low mound of stones overlain by a turf mound and surrounded by a kerb of large stones approximately 8m in diameter. The site is of sufficient quality to be designated a Scheduled Monument. Damage caused by visitors should be repaired.*

*g.*

## **1. INTRODUCTION**

### **1.1 Project Commission**

- 1.1.1 Fan Brycheiniog (CPAT PRN 142655) is a possible Bronze Age round barrow lying at 802m in the Brecon Beacons National Park (centred on SN82522179). Severe visitor erosion is affecting the western side of the site. This site has not been previously recognised as a prehistoric round barrow but during a site visit on 30 June 2016 it was noted that a trig point at this location seemed to be located on a low mound, and that a kerb of large stone blocks had been exposed on the badly eroding west side of the mound. If it was a burial mound it would be the third round barrow on Fan Foel/Fan Brycheiniog and would be worthy of scheduling.
- 1.1.2 In 2017 Cadw grant aided a project to evaluate the site to ascertain whether it is a burial mound or not. It was proposed that the archaeological work would be the minimum sufficient to characterise the site, and to inform a future programme of restoration
- 1.1.3 A written specification for the archaeological evaluation was produced by Dyfed Archaeological Trust and was approved by Cadw.

### **1.2. Project Objectives**

- 1.2.1 The project objectives were:
- Provision of a written specification of investigation to outline the methodology by which Dyfed Archaeological Services will undertake an archaeological evaluation
  - To establish the character, extent and date range for any archaeological deposits exposed.
  - To appropriately investigate and record any archaeological deposits exposed.
  - To produce an archive and report of any results.
- 1.2.2 The written specification of investigation is in accordance with the relevant Standard and Guidance and the Codes of Conduct of the Chartered Institute for Archaeologists (CIfA 2014).

### **1.3 Report Outline**

- 1.3.1 This report provides a summary and discussion of the archaeological evaluation and its results, and puts those results within their regional and national context.

### **1.4 Abbreviations**

- 1.4.1 Sites recorded on the regional Historic Environment Record (HER) are identified by their Primary Record Number (PRN) and located by their National Grid Reference (NGR). Sites recorded on the National Monument Record (NMR) held by the Royal Commission on the Ancient and Historical Monuments of Wales (RCAHMW) are identified by their National Primary Record Number (NPRN). Scheduled Monument (SM). Altitude is expressed to Ordnance Datum (OD). References to cartographic and documentary

evidence and published sources will be given in brackets throughout the text, with full details listed in the sources section at the rear of the report.

## 1.5 Illustrations

1.5.1 Printed map extracts are not necessarily produced to their original scale.

## 1.6 Timeline

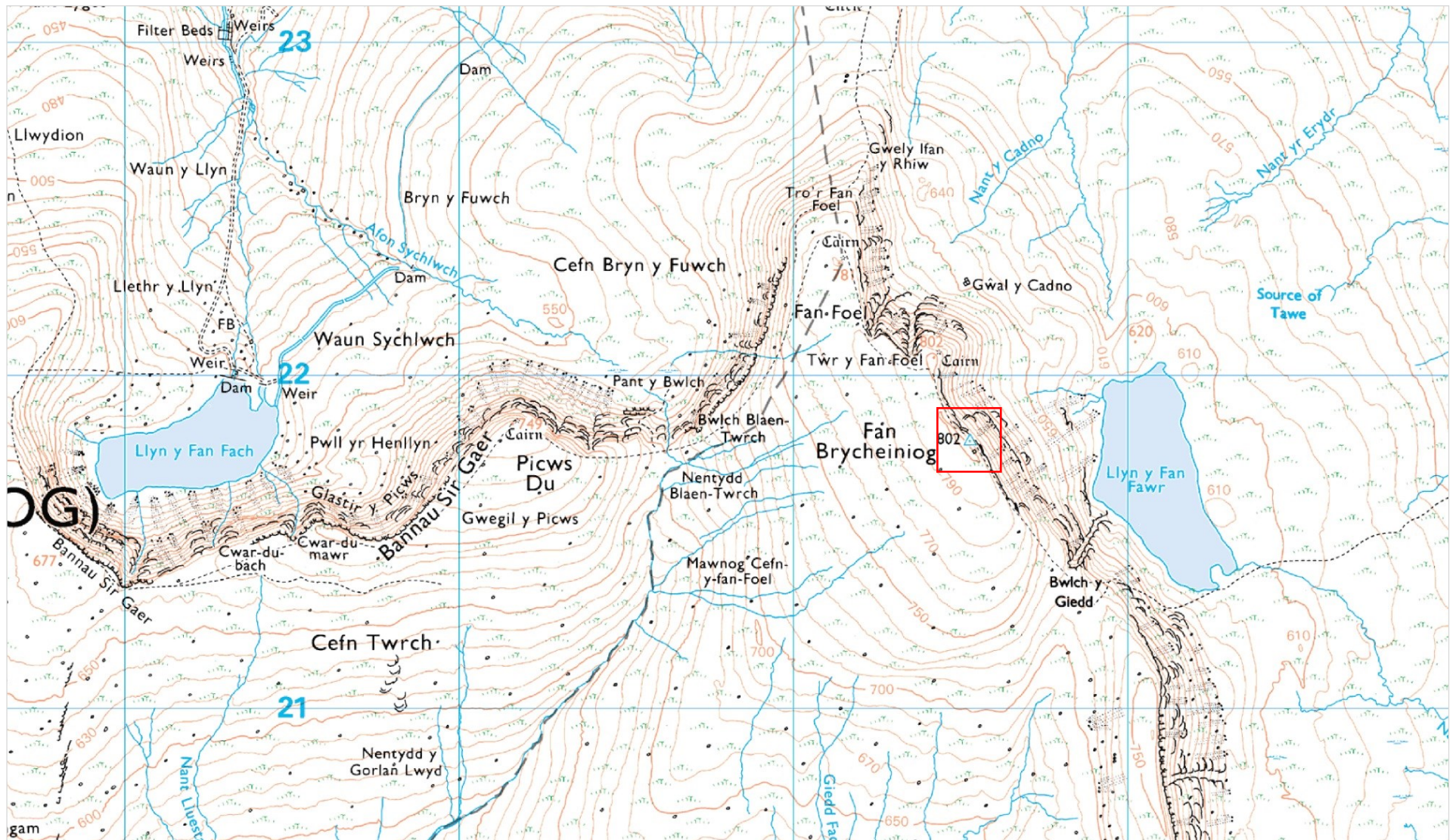
1.6.1 The following timeline (Table 1) is used within this report to give date ranges for the various archaeological periods that may be mentioned within the text.

Period	Approximate date	
Palaeolithic –	c.450,000 – 10,000 BC	<b>Prehistoric</b>
Mesolithic –	c. 10,000 – 4400 BC	
Neolithic –	c.4400 – 2300 BC	
Bronze Age –	c.2300 – 700 BC	
Iron Age –	c.700 BC – AD 43	
Roman (Romano-British) Period –	AD 43 – c. AD 410	<b>Historic</b>
Post-Roman / Early Medieval Period –	c. AD 410 – AD 1086	
Medieval Period –	1086 – 1536	
Post-Medieval Period <sup>1</sup> –	1536 – 1750	
Industrial Period –	1750 – 1899	
Modern –	20 <sup>th</sup> century onwards	

**Table 1:** Archaeological and Historical Timeline for Wales.

---

<sup>1</sup> The post-medieval and industrial periods are combined as the post-medieval period on the Regional Historic Environment Record as held by Dyfed Archaeological Trust



**Figure 1:** Location map of Fan Brycheiniog mound

## **2. THE SITE**

### **2.1 Site Location and Topography**

- 2.1.1 This site lies beneath an OS trig point (NGR SN 8253 2179) at 802m OD, 270m (Figure 1, Photos 1 & 2) south of the scheduled Twr y Fan Foel round barrow (CPAT PRN 1501, SM BR275 (POW)).
- 2.1.2 The site is observable as a low, heavily eroded mound that is situated on the highest point of the escarpment overlooking Llyn y Fan Fawr to the southeast. A concrete trig point has been erected in the centre of the mound. The mound has been so severely eroded away that the concrete base of the trig point is now clearly visible (Photo 1). The mound measures approximately 9.5m in diameter but is not completely circular in plan as a portion of the southeastern edge of the mound has been lost where it meets the steep southeast facing escarpment edge (Figure 4, Photo 2).
- 2.1.3 The underlying solid geology comprises Brownstones Formation - Sandstone and Argillaceous Rocks, formed approximately 393 to 419 million years ago in the Devonian Period.
- 2.1.4 These sedimentary rocks are fluvial in origin. They are detrital, ranging from coarse- to fine-grained and form beds and lenses of deposits reflecting the channels, floodplains and levees of a river or estuary (if in a coastal setting). Geological information has been obtained through the British Geological Survey mapping portal.

### **2.2 Archaeological Background**

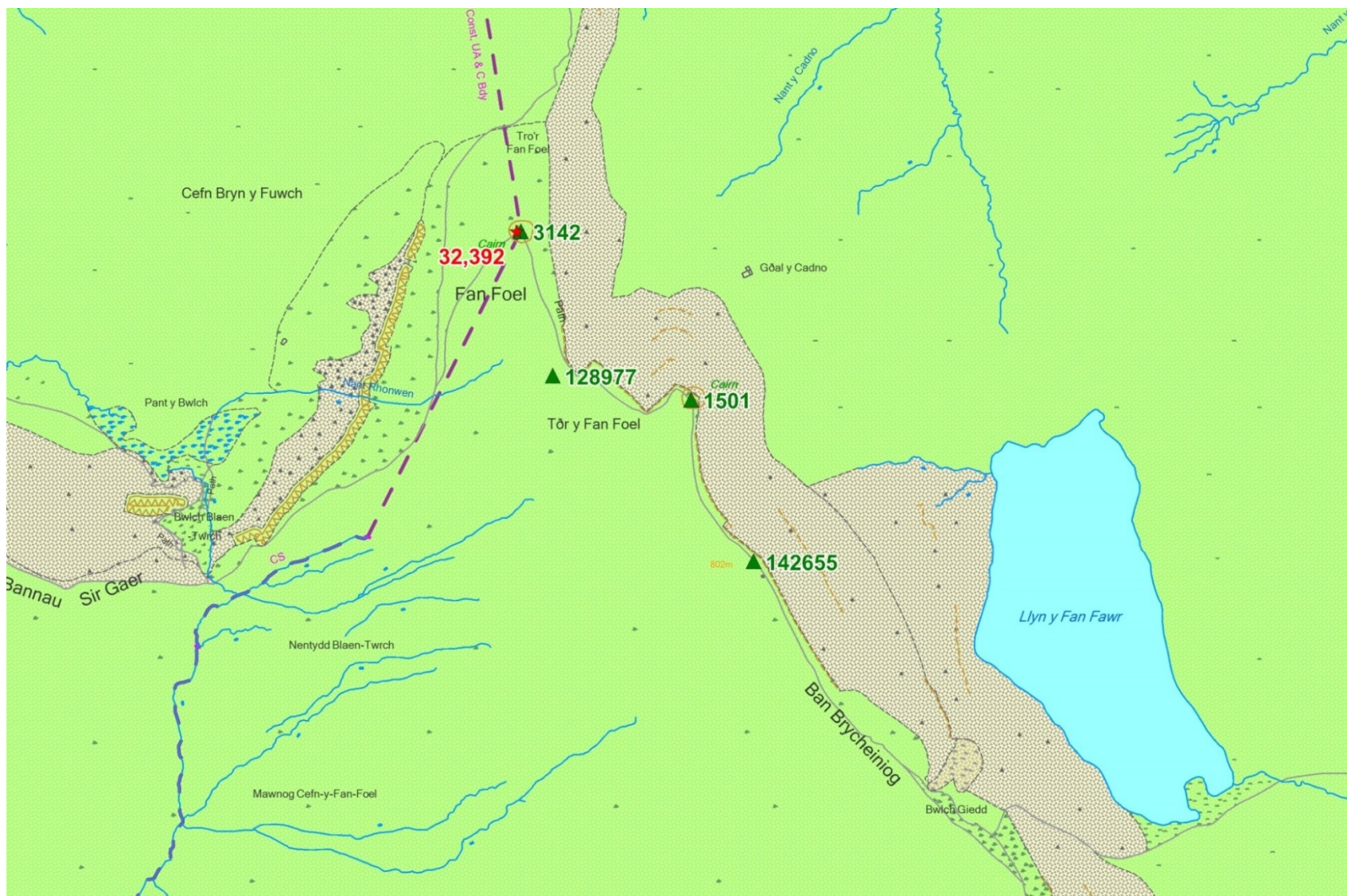
- 2.2.1 The Dyfed and Clwyd-Powys Historic Environment Records (HER) record three other Bronze Age burial barrows/cairns (Figure 2, Table 2) in the vicinity of Fan Brycheiniog. All four sites are situated on the high escarpment above Llyn y Fan Fach/Llyn y Fan Fawr known as Bannau Sir Gar/Fan Brycheiniog which peaks at over 800 m.
- 2.2.2 Two of the barrows are scheduled monuments; Fan Foel (DAT PRN 32392, CPAT PRN 3142) and Twr y Fan Foel (CPAT PRN 1501) have been scheduled under the same scheduling BR 275 (POW).
- 2.2.3 The site lies within the Black Mountain and Mynydd Myddfai Registered Historic Landscape in the Y Mynydd Du/Black Mountain character area (Area 240), which comprises open moorland. The remains of past human exploitation are slight but nevertheless distinctive. Bronze Age burial mounds which cap the summits of most hills are the most obvious ancient elements of the landscape, but there are numerous abandoned settlements scattered across the mountain, mostly in valleys and at lower levels. Most are probably Post-Medieval, but some may be earlier. They are sometimes associated with old field systems and sheepfolds. Industrial remains are also present: quarries and tramways. Despite all these remains, the landscape is one of open uninhabited moorland with rough grazing at lower levels and blanket peats at higher elevations.



**Photo 1:** Photograph of the site showing the possible kerb and mound exposed by visitor erosion. Looking roughly northeast. 1m scale



**Photo 2:** Photograph of the low mound of Fan Brycheiniog situated on the edge of the steep southeast-facing escarpment. Looking approximately northwest.



**Figure 2:** Archaeological and historical sites recorded on the Dyfed and CPAT HER that lie in the vicinity of Fan Brycheiniog. Sites are listed in Table 2.

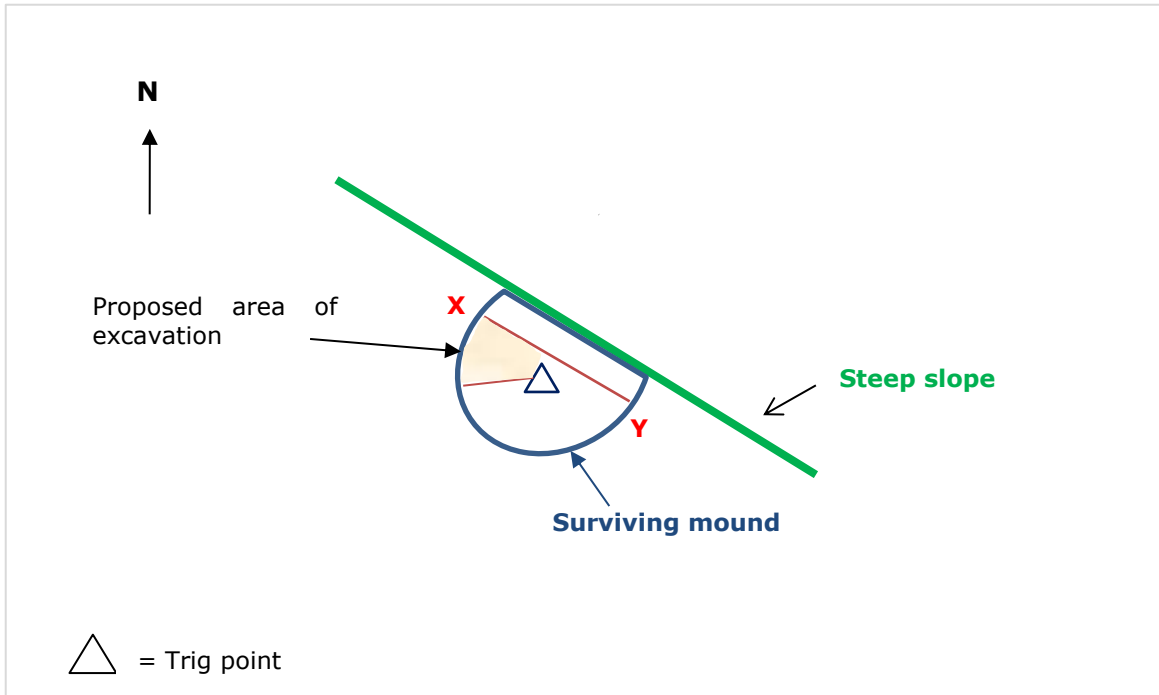
<b>PRN</b>	<b>NAME</b>	<b>SITE TYPE</b>	<b>DESCRIPTION</b>	<b>NGR</b>
<b>DAT 32392</b> <b>CPAT 3142</b>  <b>Scheduled Monument</b> <b>BR275 (POW)</b>	Fan Foel	Bronze Age Round Barrow	<p>A round barrow in a dramatic location on the top of the Llyn-y Fan-Fach/Llyn-y-Fan Fawr escarpment at 781m above sea level. In 2002 it was approximately 16.2m in diameter and 1.2m high. Severe erosion was noted in 2002, and so in 2003-4 small scale excavation was undertaken in advance of a programme of restoration and consolidation.</p> <p>The excavation (Hughes and Murphy 2013) demonstrated that the barrow had been constructed in a grass-heath environment. Human activity in the form of trampling and burning took place on the site several years prior to construction. The primary barrow consisted of a cist containing a cremation burial, accompanied by a Food Vessel, a chert plano-convex knife and other lithic artefacts, around which an earth mound made from local turves had been built. Two radiocarbon dates with a total range of 2140-1895 Cal BC were obtained from this burial. A circular kerb was later built on the primary mound, and the mound may have been capped or heightened at this stage by the addition of a cairn. The remains of a cremation burial accompanied by a Collared Urn were found in stones close this secondary kerb. Two radiocarbon dates with a total range of 1975-1740 Cal BC were obtained from this cremation burial. A floral tribute of meadowsweet accompanied both cremation burials.</p> <p>Located on a summit at 781 m above OD is a turf and peat covered cairn, 16.2m in diameter and 1.2m high on the E fading to nothing on the W. Loose stones have been piled up to make a shelter on the NE side. On the border between Carmarthenshire and Powys.</p>	SN82142234
<b>CPAT 1501</b>  <b>Scheduled Monument</b> <b>BR 275 (POW)</b>	Twr Y Fan Foel Cairn	Bronze Age Round Barrow (cairn)	<p>Well-constructed cairn, largely turf-covered but with its south edge now actively eroding, exposing the stone make-up in a scar up to 0.4m deep. The cairn measures c. 9m in diameter and is up to 0.6m high. A small walkers' cairn on the summit is composed of small stone not obviously robbed from the burial cairn. The location is impressive, with views in all directions. (CPAT 2004)</p> <p>On the tip of a promontory of the N.E.-facing escarpment of Twr Y Fan Foel, 760 m above O.D. is a small turf-covered cairn 11 m in diameter and 1.2 m high. Scheduled with nearby cairn (CPAT PRN 3142) in May 2000 - The 2 cairns are within sight of each other. Cairn appears untouched circular mound, 11m diameter (Cadw, 2000).</p>	SN82432206
<b>CPAT 128977</b>	Twr y Fan Foel, Cairn	Prehistoric cairn	Large stone cairn 15m in diameter. Partially destroyed to build modern cairn.	SN822221
<b>CPAT 142655</b>	Fan Brycheiniog	Bronze Age Round Barrow	A round barrow recognised beneath the trig point on Fan Brycheiniog and the subject of an evaluation by the Dyfed Archaeological Trust in 2017.	SN8252921795

**Table 2:** Archaeological and historical sites recorded on the Dyfed and CPAT HER that lie in the vicinity of Fan Brycheiniog, shown in Figure 2.

### **3. ARCHAEOLOGICAL EVALUATION**

#### **3.1 Methodology**

- 3.1.1 The evaluation was carried out following the methodology set out in the written specification for the archaeological evaluation that was produced by Dyfed Archaeological Trust and approved by Cadw.
- 3.1.2 The proposed archaeological work involved the minimal amount of excavation that would ensure the site was adequately characterised.
- 3.1.3 The small amount of turf surviving in the north-west area of the mound was removed by hand (Figure 3, Photo 2), where the stone kerb is also most visible. The turf was kept to one side in order that it could be replaced at the end of the excavation.
- 3.1.4 The opened area was cleaned using hand tools to expose the deposits below the turf.
- 3.1.5 Some excavation and removal of the deposits was carried out to characterise the construction of the mound
- 3.1.6 A narrow trench was excavated along the line marked X-Y in Figure 3 to the north of the trig point, against the exposed edge of the turf. This allowed a profile through the mound to be recorded.
- 3.1.7 All archaeological deposits and features were recorded by archaeological context record sheet, scale drawing/detailed survey, photography and site notebooks. A digital photographic record was maintained.
- 3.1.8 Recording of all archaeological structures, features or deposits conformed to best current professional practice and was carried out in accordance with the Recording Manual used by Dyfed Archaeological Trust.
- 3.1.9 A Trimble total station theodolite (5600s) with prismless capability and inbuilt data recorder was used to record the earthwork in detail.
- 3.1.10 A topographic survey of the earthwork was undertaken.
- 3.1.11 The survey data was downloaded into geosite5, georeferenced to ordnance survey grid and height above ordnance datum and then exported into dxf format and brought into map info gis software.
- 3.1.12 The narrow trench (X-Y) was backfilled at the end of the excavation with the material removed from the trench. All turf was replaced as near to its original position as possible.
- 3.1.13 This evaluation was undertaken in accordance with the Chartered Institute of Archaeologists' (CIfA) Standard and Guidance for an Archaeological Field Evaluation (2014).



**Figure 3:** Sketch showing proposed area of excavation.

#### **4. RESULTS**

- 4.1 The evaluation was carried out in fine weather over 3 days from 8<sup>th</sup> – 11<sup>th</sup> May 2017.
- 4.2 All individual archaeological deposits or features were numbered using the open-ended numbering system. Each numbered deposit was described and is shown within rounded brackets ( ) in the text. A summary of the descriptions are listed in Appendix I.

##### ***Northwest quadrant***

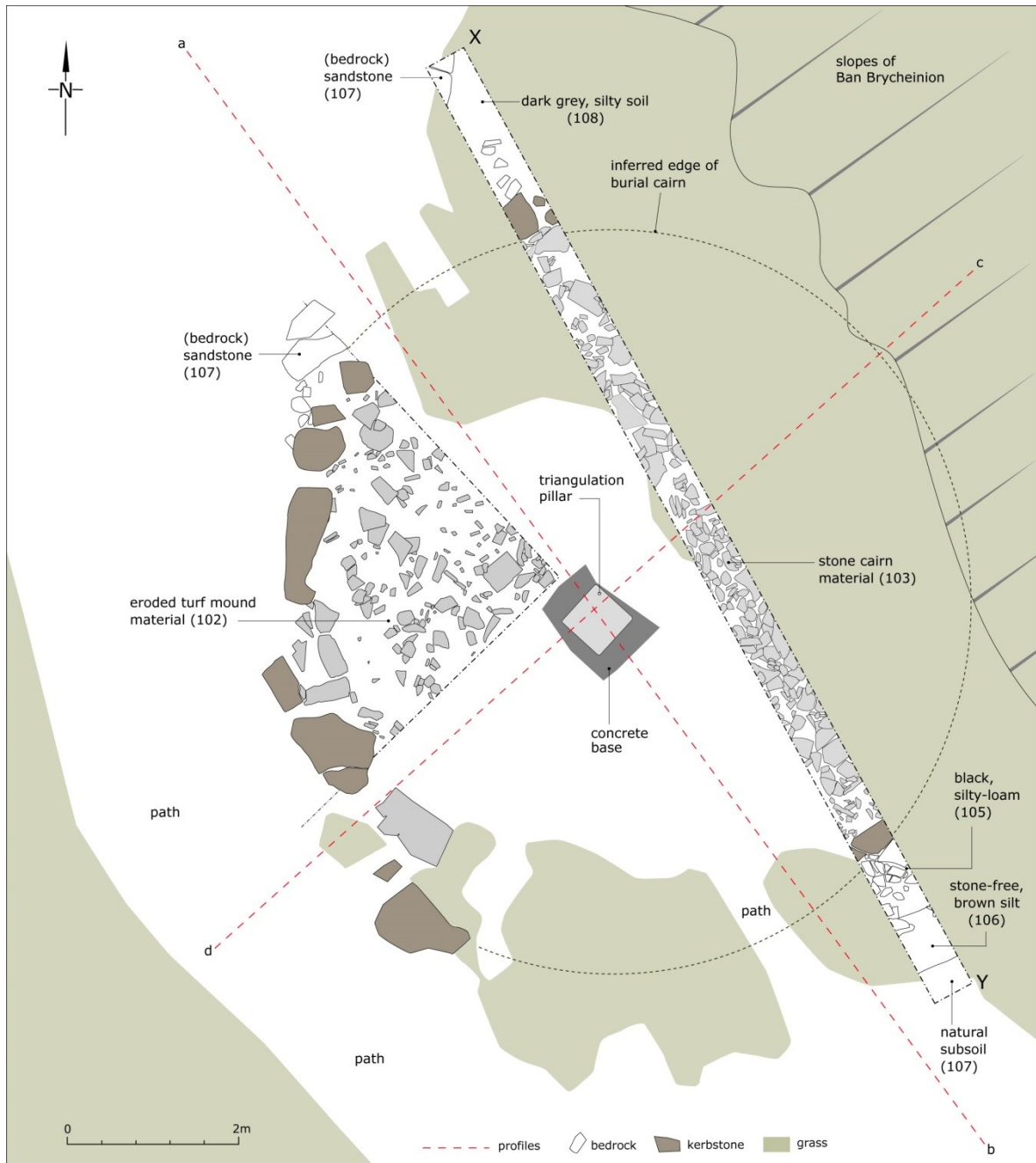
- 4.3 Much of the current turf and topsoil across the mound had been removed by visitor erosion, so much so that roughly 0.35m of the concrete base of the trig point was exposed (Photo 3).
- 4.4 Within the northwest quadrant of the mound the surviving patches of turf and underlying friable topsoil (101) were removed by hand (Figure 4, Photos 3 & 4). Once removed the whole quadrant was cleaned by hand revealing compacted dark orangey/brown silt (102). This material varied in compaction, was mottled in colour and somewhat greasy in places; indicative of turf buried over an extensive period of time. Combined with and protruding through this deposit (102) were noticeable medium and large sized pieces of sandstone (103) (Photo 5).
- 4.5 Deposits (102) and (103) were only visible within the area bounded by a stone kerb (104), comprised of large blocks of sandstone arranged in an arc. Outside of this kerb, in contrast to the material bounded by the stone kerb, was a yellow/brown sandy matrix surrounding natural sandstone bedrock (Photos 6 & 7).
- 4.6 No further excavation was undertaken in the northwest quadrant. The area was planned and surveyed.

##### ***Evaluation trench***

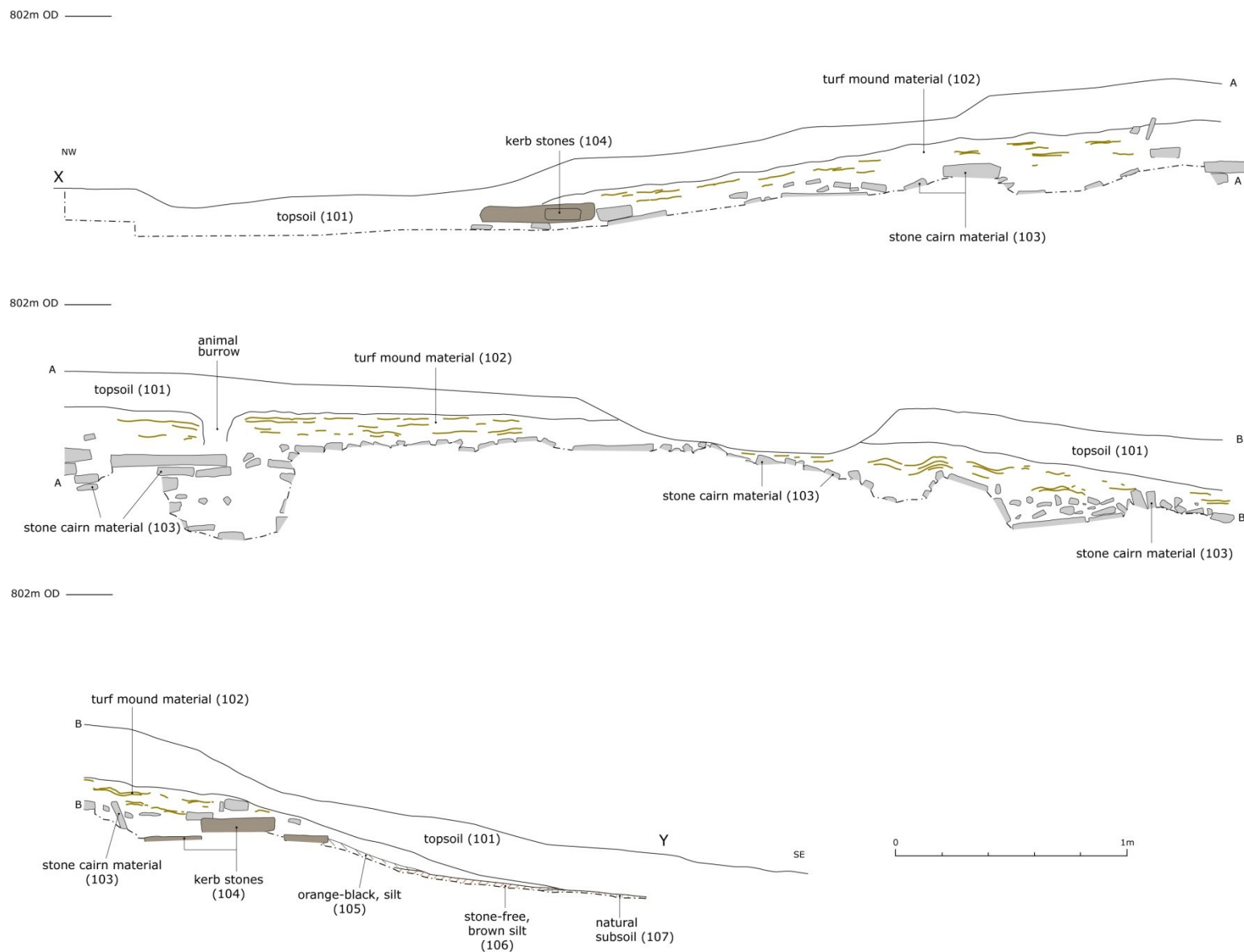
- 4.7 A single trench c.12.6m long and 0.5m wide 9.0m orientated roughly northwest-southeast (Figures 4 & 5, Photo 8) was opened across the width of the mound to the east of the trig point, in an area of surviving unbroken grass cover across the mound.
- 4.8 The narrow trench was de-turfed by hand. Beneath the turf lay a deposit of friable grey silty topsoil which overlay compacted dark orangey brown silt; the buried turf material seen in the northwest quadrant (102) (Photos 8-10). Seen in section (Photos 11-13) the compacted layers and edges of individual turfs can clearly be seen. The depth of this deposit varied along the whole trench but it unmistakably tapered away at the stone kerb, creating in section a clear impression of a distinct mound (Figures 5 & 6).
- 4.9 Removal of buried turf layer (102) revealed a large number of variously sized flat pieces of sandstone (103) (Photos 14-17) within a dark silty soil matrix. Within the narrow trench at the northern end the stone appeared to have been laid more horizontally above each other end but towards the southern end the stone was more haphazardly placed; with many voids between the stones.
- 4.10 The stone (103) was not excavated but towards the centre of the trench an absence of stone may have been evidence of a cut through the mound that can be seen in Figure 5 (Photo 18). Unfortunately, this area had also been heavily disturbed by an animal burrow so it was difficult to ascertain within such a narrow area what the absence of stone signified. However, removing the loose disturbed soil within the possible cut revealed that the

stone deposit was 0.66m deep at this point and rested upon mottled dark orangey brown compacted silt (105).

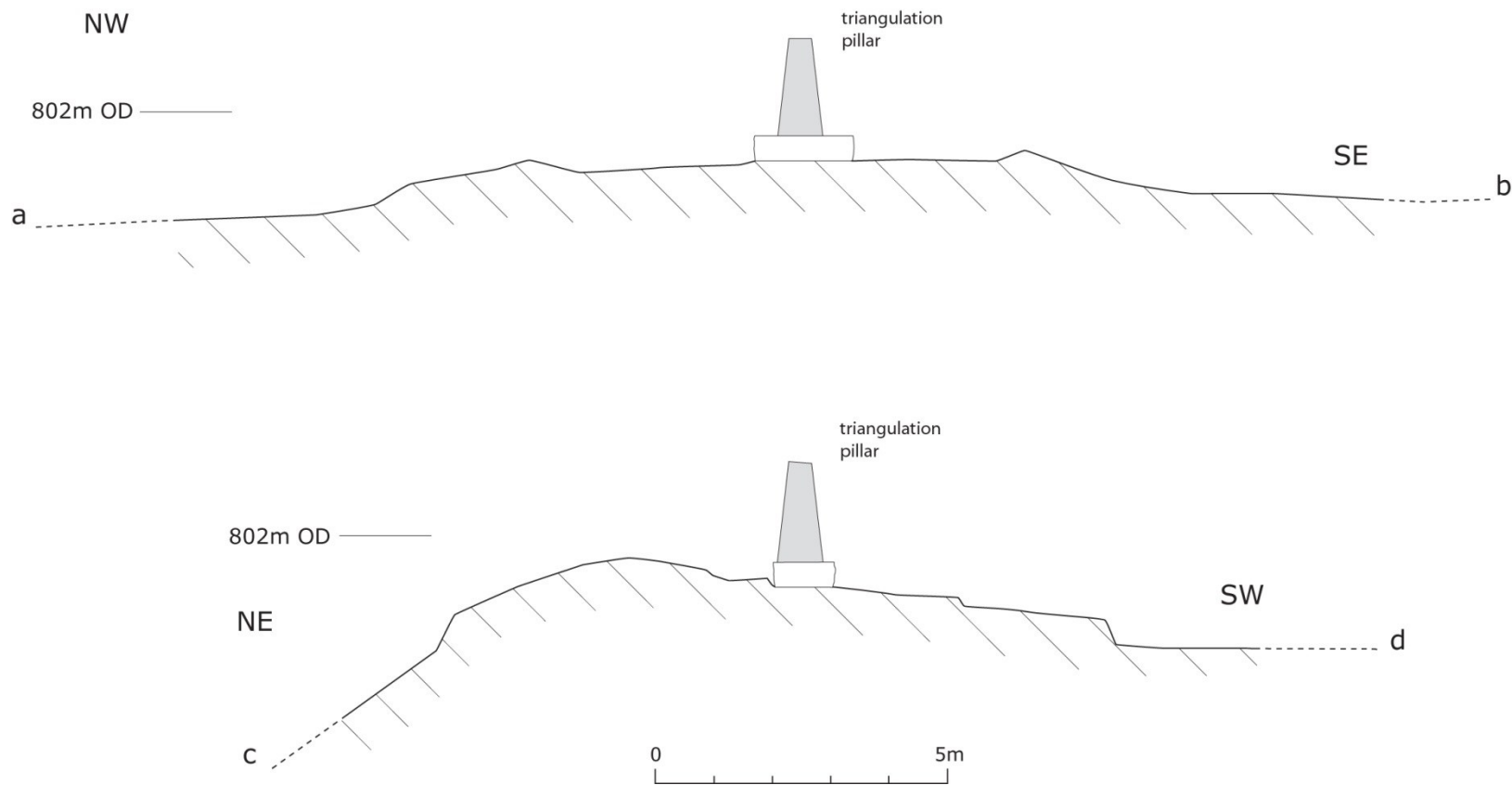
- 4.11 This same deposit (105) was also seen protruding from under the stone kerb at the southern end of the trench (Photo 19) and is possibly a remnant of the original buried surface that the cairn was constructed upon. Also recorded in this area is a stone free dark brown silt (106) that underlies (105) (Figures 4 & 5). This is possibly a very thin trace of a buried soil preserved, as was (105) by the turf mound material that seals both deposits in this area.
- 4.12 At the northern end of the trench the buried turf mound-material (102) only slightly overlapped the stone kerb. Removing the topsoil in this area revealed outside of the stone kerb a deposit of dark grey silty soil similar to (105) although more friable, that appeared to lie above sandstone bedrock (107). It was not investigated further but is possibly a remnant of a buried soil.
- 4.13 At both ends of the trench evidence of a stone kerb (104) was clearly seen (Photos 19 & 20) that demarcates the stone mound. The turf mound material had over time slumped over the edge of the stone kerb at both ends.
- 4.14 The mound was surveyed in detail and profiles of the mound are shown in Figure 6.
- 4.15 No artefacts were recovered during this evaluation. No soil samples were taken during the evaluation.
- 4.16 The narrow trench (X-Y) was backfilled at the end of the excavation with the material removed from the trench (Photo 21). All turf was replaced as near to its original position as possible.



**Figure 4:** Plan showing the trench and northwest quadrant that were investigated during the evaluation.



**Figure 5:** The southwest facing section of the evaluation trench.



**Figure 6:** Profiles through the surviving mound of Fan Brycheiniog. The positions of the profile lines area shown in Figure 4

## **5. CONCLUSIONS**

- 5.1 The results of the evaluation support the proposition that the earthwork at Fan Brycheiniog is the remains of a round barrow burial mound; probably of Bronze Age date.
- 5.2 The evaluation has shown that the round barrow was constructed from a stone cairn whose circular outer edge was bordered by a kerb created from sandstone blocks. Over this cairn turfs had been placed creating a mound.
- 5.3 The construction method of the mound is one commonly recorded at other excavated round barrow sites such as Fan Foel of Bronze Age date.
- 5.4 The round barrow is being very badly damaged by visitor erosion and requires remedial work to prevent further damage. The depth of the exposed concrete base of the trig point shows that at least 0.35m of modern turf and topsoil and prehistoric mound has been eroded away in some areas.

## 6. PHOTOGRAPHS



**Photo 3:** The northwest quadrant of the mound prior to removal of the turf. Looking approximately northeast. 1m scale



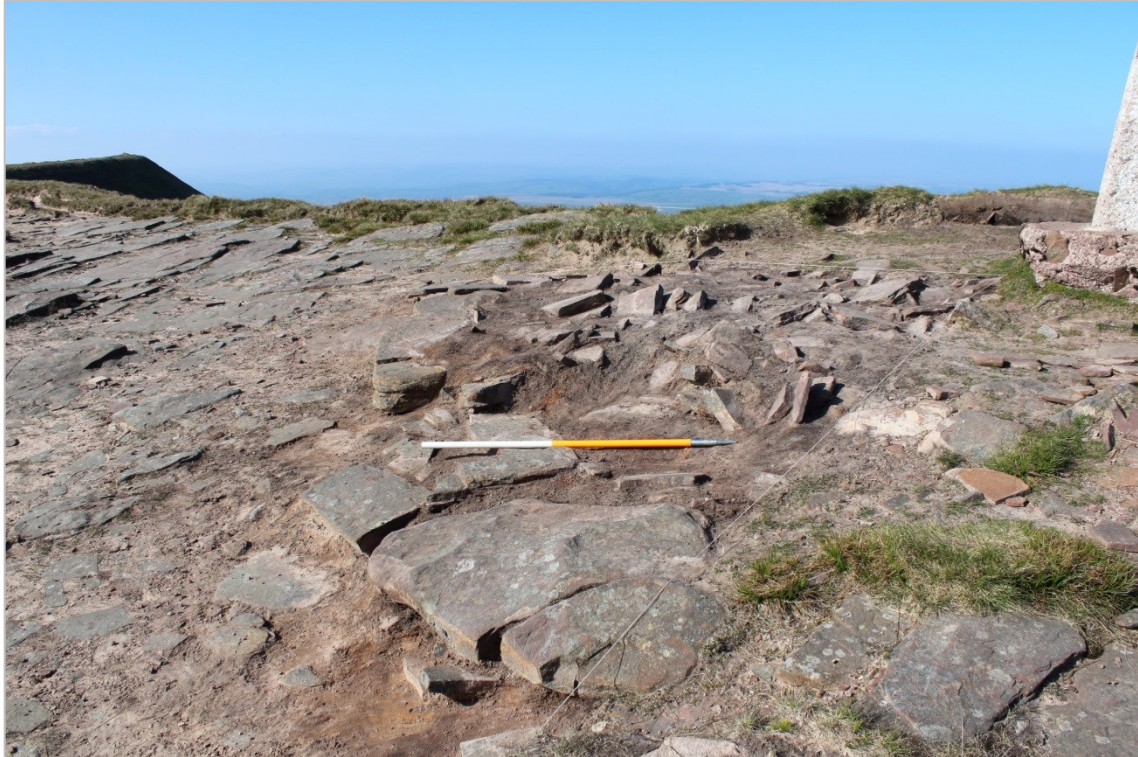
**Photo 4:** Cleaning after removal of turf in the northwest quadrant. Looking approximately southsoutheast.



**Photo 5:** Overhead photograph of the cleaned northwest quadrant showing the cairn material and outer stone kerb. 1m scale



**Photo 6:** The cleaned northwest quadrant showing clearly the outer stone kerb. Looking approximately southeast. 1m scale



**Photo 7:** *The cleaned northwest quadrant showing the darker mound material bounded by the stone kerb. Looking approximately north. 1m scale*



**Photo 8 (left):**  
*The narrow trench  
across Fan  
Brycheiniog mound  
after initial  
removal of turf and  
topsoil. Looking  
southeast. 1m  
scale*

**Photo 9 (right):**  
*The southern end  
of the trench  
showing the  
contrasting colours  
between the  
darker buried turf  
material and the  
lighter surrounding  
sandstone bedrock.  
1m scale*





**Photo 10:** The evaluation trench at the end of day 2. Looking northwest.  
1m scale



**Photo 11:** The southwest facing section at the very northern end of the  
evaluation trench showing the compressed layers of buried turfs. 0.5m scale



**Photo 12:** The southwest facing section at the northern end of the evaluation trench showing the compressed layers of buried turfs above the pitched stone.  
0.5m scale



**Photo 13:** The southwest facing section at the southern end of the evaluation trench showing the compressed layers of buried turfs above the pitched stone.  
0.5m scale



**Photo 14 (left):**  
*The southern end  
of the evaluation  
trench showing the  
remnant of dark  
soil (105)  
protruding from  
under the stone  
kerb. Looking  
northwest. 1m  
scale*



**Photo 15 (right):**  
*The northern end  
of the trench  
showing the stone  
kerb. Looking  
southwest. 1m  
scale*

Stone kerb

Stone kerb



**Photo 16 (left):**  
*The revealed  
pitched stone of  
the cairn at the  
southern end of  
the trench. Looking  
northwest. 1m  
scale*

**Photo 17 (right):**  
*Detail of the more  
level stone within  
the northern end  
of the trench.  
Looking northwest.  
0.5m scale*





**Photo 18:** The absence of stone seen in the centre of the trench which may be evidence of a cut through the mound. Looking northeast. 0.5m scale



**Photo 19:** Detail of the stone kerb at the southern end of the evaluation trench showing the remnant of dark soil (105) protruding from under the kerb. Looking southwest. 0.5m scale



**Photo 20:** Detail of the stone kerb at the northern end of the evaluation trench. Looking southwest. 0.5m scale



**Photo 21:** The backfilled trench at the end of the excavation. Looking southeast.

## 7. SOURCES

### Publications

Brown, D H, 2011 *Archaeological Archives: A guide to best practice in creation, compilation, transfer and curation*. Chartered Institute of Field Archaeologists.

CIFA, 2014 *Chartered Institute of Field Archaeologists Standards and Guidance for Archaeological Field Evaluation*.

Hughes, G and Murphy, K, 2013 Fan Foel round barrow, Mynydd Du, South Wales: archaeological excavation and palaeoenvironmental analysis, 2002-04, *Archaeological Cambrensis*, 162, 105-146.

### Database

Dyfed Archaeological Trust Historic Environment Record

RCAHMW Coflein Database <http://www.coflein.gov.uk/>

Cof Cymru - National Historic Assets of Wales  
<http://cadw.gov.wales/historicenvironment/recordsv1/cof-cymru/?lang=en>

### Online resources

British Geological Survey: [www.bgs.ac.uk](http://www.bgs.ac.uk)

## **APPENDIX I**

### **Project Archive**

Project Number: Cadw DAT 146

ERN: CPAT142656

262 x Digital photographs for photogrammetry (262 x JPEGs)

120 x Digital photographs; Film Number CPAT142656 (60 x JPEGs, 60 x TIFFs)

1x Photo catalogue

Survey data- 3 GS5 files

### **Context Register**

<b>Context</b>	<b>Description</b>	<b>Interpretation</b>
101	Turf and topsoil – friable grey sandy silt	Existing turf and topsoil
102	Compacted dark orangey/brown silt – mottled in colour across deposit, greasy in places	Buried turf material that once formed turf mound overlying stone cairn.
103	Substantial deposit of sandstone; medium and large sized pieces of flat sandstone	Stone cairn that lay below turf mound.
104	Large sized pieces of sandstone forming a kerb	Circular stone kerb to burial mound, that retains stone cairn material
105	Orange/black silty loam visible at southern end of trench underlying stone kerb & visible in central disturbed area underlying stone cairn material	Buried ground surface – upon which the burial mound was constructed
106	Stone free dark brown silt – visible at southern end of trench underlying (105) and above (107)	Buried soil
107	Natural sandstone bedrock within a sandy silty brown matrix	Natural bedrock
108	Dark grey silty soil	Possibly similar to (105) but appeared more friable

# FAN BRYCHEINIOG, BRECON BEACONS, POWYS ARCHAEOLOGICAL INVESTIGATION 2017

REPORT NUMBER 2017/50

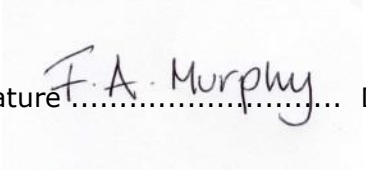
CADW PROJECT NO: DAT 146

Hydref 2017  
October 2017

Paratowyd yr adroddiad hwn gan / This report has been prepared by

**Fran Murphy**

Swydd / Position: **Project Officer DAT Archaeological Services**

Llofnod / Signature  ..... Dyddiad / Date 12/12/17

Mae'r adroddiad hwn wedi ei gael yn gywir a derbyn sêl bendith  
This report has been checked and approved by

**Ken Murphy**

ar ran Ymddiriedolaeth Archaeolegol Dyfed Cyf.  
on behalf of Dyfed Archaeological Trust Ltd.

Swydd / Position: **Director Dyfed Archaeological Trust**

Llofnod / Signature  ..... Dyddiad / Date 02/01/18

Yn unol â'n nôd i roddi gwasanaeth o ansawdd uchel, croesawn unrhyw sylwadau sydd gennych ar gynnwys neu strwythur yr adroddiad hwn

As part of our desire to provide a quality service we would welcome any comments you may have on the content or presentation of this report

ymddiriedolaeth archaeolegol



archaeological trust